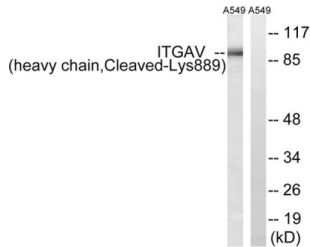


# Integrin Alpha V Cleaved-Lys889 Heavy Chain (ITGAV Cleaved-K889) Antibody

Catalogue No.: abx015594



Western blot analysis of extracts from A549 cells, treated with etoposide (25uM, 1hour), using ITGAV (heavy chain, Cleaved-Lys889) antibody.

Rabbit polyclonal antibody against ITGAV protein. Immunogen region is C-terminal. Specificity is as follows for the reactive species: H:K889.

<b>Target:</b>	Integrin Alpha V Cleaved-Lys889 Heavy Chain (ITGAV Cleaved-K889)
<b>Clonality:</b>	Polyclonal
<b>Target Modification:</b>	Lys889
<b>Modification:</b>	Cleaved
<b>Reactivity:</b>	Human
<b>Tested Applications:</b>	ELISA, WB
<b>Host:</b>	Rabbit
<b>Recommended dilutions:</b>	WB: 1/500 - 1/3000, ELISA: 1/10000. Optimal dilutions/concentrations should be determined by the end user.
<b>Conjugation:</b>	Unconjugated
<b>Immunogen:</b>	The antiserum was produced against synthesized peptide derived from C-terminal of human ITGAV.
<b>Isotype:</b>	IgG
<b>Form:</b>	Liquid
<b>Purification:</b>	Purified from rabbit antiserum by affinity chromatography using epitope-specific immunogen.
<b>Storage:</b>	Aliquot and store at -20°C. Avoid repeated freeze/thaw cycles.

# Datasheet

Version: 1.0.0  
Revision date: 03 Dec 2024



**UniProt Primary AC:** P06756 ([UniProt](#), [ExPASy](#))

**KEGG:** hsa:3685

**String:** [9606.ENSP00000261023](#)

**Buffer:** PBS (without Mg<sup>2+</sup> and Ca<sup>2+</sup>), pH 7.4, 150 mM NaCl, 0.02% sodium azide, 50% glycerol.

**Concentration:** 1 mg/ml

**Note:** This product is for research use only.

For Reference Only