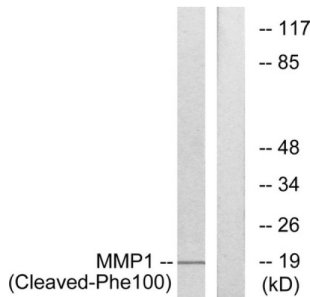


Matrix Metalloproteinase 1 Cleaved-Phe100 (MMP1 Cleaved-F100) Antibody

Catalogue No.: abx015601



Western blot analysis of extracts from 549 cells, treated with etoposide (25uM, 24hours), using MMP1 (Cleaved-Phe100) antibody.

Rabbit polyclonal antibody against MMP1 protein. Immunogen region is Internal. Specificity is as follows for the reactive species: H:F100.

Target:	Matrix Metalloproteinase 1 Cleaved-Phe100 (MMP1 Cleaved-F100)
Clonality:	Polyclonal
Target Modification:	Phe100
Modification:	Cleaved
Reactivity:	Human
Tested Applications:	ELISA, WB
Host:	Rabbit
Recommended dilutions:	WB: 1/500 - 1/3000, ELISA: 1/10000. Optimal dilutions/concentrations should be determined by the end user.
Conjugation:	Unconjugated
Immunogen:	The antiserum was produced against synthesized peptide derived from internal of human MMP1.
Isotype:	IgG
Form:	Liquid
Purification:	Purified from rabbit antiserum by affinity chromatography using epitope-specific immunogen.
Storage:	Aliquot and store at -20°C. Avoid repeated freeze/thaw cycles.

Datasheet

Version: 2.0.0

Revision date: 01 Sep 2024



UniProt Primary AC: P03956 ([UniProt](#), [ExPASy](#))

KEGG: hsa:4312

String: [9606.ENSP00000322788](#)

Buffer: PBS (without Mg^{2+} and Ca^{2+}), pH 7.4, 150 mM NaCl, 0.02% sodium azide, 50% glycerol.

Concentration: 1 mg/ml

Note: This product is for research use only.

For Reference Only