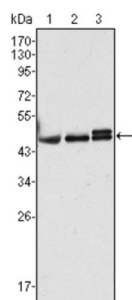
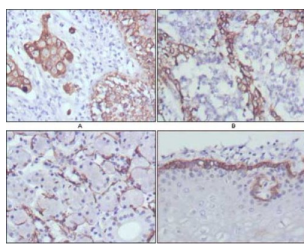


Keratin, Type I Cytoskeletal 17 (KRT17) Antibody

Catalogue No.: abx015731



Western blot analysis using CK17 antibody against Hela (1), MCF-7 (2) and A431 (3) cell lysate.



Immunohistochemical analysis of paraffin-embedded human lung cancer (A), endometrial carcinoma (B), sublingual gland (C) and esophagus (D) tissues using CK17 antibody with DAB staining.

CK17, also known as KRT17, is the type I intermediate filament chain keratin 17. It is found in nail beds, hair follicles, sebaceous glands, and other epidermal appendages. Mutations in this gene lead to Jackson-Lawler type pachyonychia congenita and steatocystoma multiplex. May play a role in the formation and maintenance of various skin appendages, specifically in determining shape and orientation of hair. May be a marker of basal cell differentiation in complex epithelia and therefore indicative of a certain type of epithelial "stem cells". May act as an autoantigen in the immunopathogenesis of psoriasis, with certain peptide regions being a major target for autoreactive T-cells and hence causing their proliferation. Required for the correct growth of hair follicles, in particular for the persistence of the anagen (growth) state. Modulates the function of TNF- α in the specific context of hair cycling. Regulates protein synthesis and epithelial cell growth through binding to the adapter protein SFN and by stimulating Akt/mTOR pathway. Involved in tissue repair.

Target: Keratin, Type I Cytoskeletal 17 (KRT17)

Clonality: Monoclonal

Reactivity: Human

Tested Applications: ELISA, WB, IHC

Host: Mouse

Recommended dilutions: ELISA: 1/10000, WB: 1/500 - 1/2000, IHC: 1/200 - 1/1000. Optimal dilutions/concentrations should be determined by the end user.

Conjugation: Unconjugated

Immunogen: Purified recombinant fragment of CK17 expressed in E. coli.

Datasheet

Version: 3.0.0
Revision date: 19 Apr 2025



Isotype:	IgG _{2b}
Form:	Liquid
Purification:	Unpurified ascites.
Storage:	Aliquot and store at -20°C. Avoid repeated freeze/thaw cycles.
UniProt Primary AC:	Q04695 (UniProt , ExPASy)
Gene Symbol:	KRT17
GeneID:	3872
OMIM:	148069
HGNC:	6427
KEGG:	hsa:3872
Ensembl:	ENSG00000128422
String:	9606.ENSP00000308452
Molecular Weight:	49 kDa
Buffer:	Ascitic fluid containing 0.03% sodium azide.
Concentration:	Not determined.
Note:	THIS PRODUCT IS FOR RESEARCH USE ONLY. NOT FOR USE IN DIAGNOSTIC, THERAPEUTIC OR COSMETIC PROCEDURES. NOT FOR HUMAN OR ANIMAL CONSUMPTION.