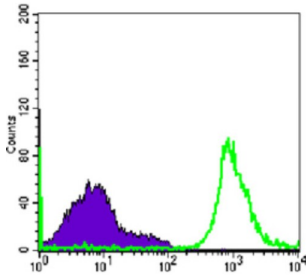
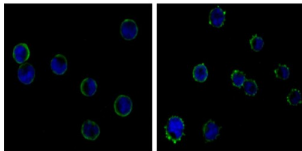


B-Lymphocyte Antigen CD19 (CD19) Antibody

Catalogue No.: abx015793



Flow cytometric analysis of Raji cells using CD19 antibody (green) and negative control (purple).



Immunofluorescence analysis of HL-60 (left) and K562 (right) cells using CD19 antibody (green). Blue: DRAQ5 fluorescent DNA dye.

The CD19 antigen (95kDa) is expressed from the earliest stage of B progenitor development, on all peripheral B cells including germinal centre B cells, and all B cell lines and B cell leukaemia tested. T cell and monocytic cell lines are negative and the antigen is lost on B cell maturation to plasma cells. The antigen is a type I integral membrane glycoprotein whose in vitro inhibition will influence B cell activation and proliferation.

Target: B-Lymphocyte Antigen CD19 (CD19)

Clonality: Monoclonal

Reactivity: Human

Tested Applications: ELISA, IF/ICC, FCM

Host: Mouse

Recommended dilutions: ELISA: 1/10000, IF/ICC: 1/200 - 1/1000, FCM: 1/200 - 1/400. Optimal dilutions/concentrations should be determined by the end user.

Conjugation: Unconjugated

Immunogen: Purified recombinant fragment of human CD19 expressed in *E. coli*.

Isotype: IgG_{2b}

Form: Liquid

Datasheet

Version: 3.0.0
Revision date: 12 Mar 2025



Purification:	Unpurified ascites.
Storage:	Aliquot and store at -20°C. Avoid repeated freeze/thaw cycles.
UniProt Primary AC:	P15391 (UniProt , ExPASy)
Gene Symbol:	CD19
GeneID:	930
OMIM:	107265
HGNC:	1633
KEGG:	hsa:930
Ensembl:	ENSG00000177455
String:	9606.ENSP00000437940
Molecular Weight:	61 kDa
Buffer:	Ascitic fluid containing 0.03% sodium azide.
Concentration:	Not determined.
Note:	THIS PRODUCT IS FOR RESEARCH USE ONLY. NOT FOR USE IN DIAGNOSTIC, THERAPEUTIC OR COSMETIC PROCEDURES. NOT FOR HUMAN OR ANIMAL CONSUMPTION.

For Reference Only