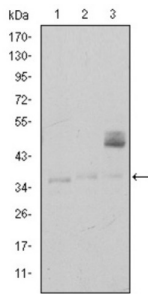
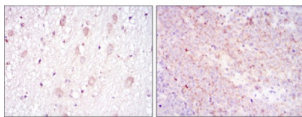


# T-cell Surface Glycoprotein CD1a (CD1A) Antibody

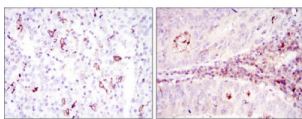
Catalogue No.: abx015794



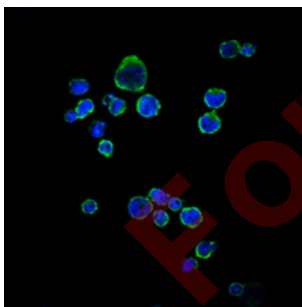
Western blot analysis using CD1A antibody against K562 (1), RAJI (2), and MOLT4 (3) cell lysate.



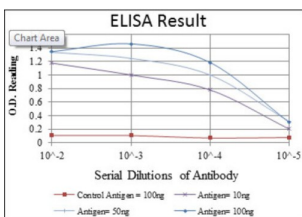
Immunohistochemical analysis of paraffin-embedded cervical cancer tissues (left) and colon cancer tissues (right) using CD1A antibody with DAB staining.



Immunohistochemical analysis of paraffin-embedded brain tissues (left) and submaxillary tumor tissues (right) using CD1A antibody with DAB staining.



Immunofluorescence analysis of RAJI cells using CD1A antibody (green). Blue: DRAQ5 fluorescent DNA dye.



Red: Control Antigen (100ng) ; Purple: Antigen (10ng) ; Green: Antigen (50ng) ; Blue: Antigen (100ng).

# Datasheet

Version: 2.0.0  
Revision date: 13 Mar 2025



CD1a is a non polymorphic MHC Class 1 related cell surface glycoprotein, expressed in association with Beta 2 microglobulin. CD1a is expressed by cortical thymocytes, Langerhan's cells and by interdigitating cells. CD1a is also expressed by some malignancies of T cell lineage and in histiocytosis X. Tissue specificity: Expressed on cortical thymocytes, epidermal Langerhans cells, dendritic cells, on certain T-cell leukemias, and in various other tissues.

<b>Target:</b>	T-cell Surface Glycoprotein CD1a (CD1A)
<b>Clonality:</b>	Monoclonal
<b>Reactivity:</b>	Human
<b>Tested Applications:</b>	ELISA, WB, IHC, IF/ICC
<b>Host:</b>	Mouse
<b>Recommended dilutions:</b>	ELISA: 1/10000, WB: 1/500 - 1/2000, IHC: 1/200 - 1/1000, IF/ICC: 1/200 - 1/1000. Optimal dilutions/concentrations should be determined by the end user.
<b>Conjugation:</b>	Unconjugated
<b>Immunogen:</b>	Purified recombinant fragment of human CD1A expressed in E. coli.
<b>Isotype:</b>	IgG <sub>1</sub>
<b>Form:</b>	Liquid
<b>Purification:</b>	Unpurified ascites.
<b>Storage:</b>	Aliquot and store at -20°C. Avoid repeated freeze/thaw cycles.
<b>UniProt Primary AC:</b>	P06126 ( <a href="#">UniProt</a> , <a href="#">ExpASY</a> )
<b>Gene Symbol:</b>	CD1A
<b>GeneID:</b>	<a href="#">909</a>
<b>OMIM:</b>	<a href="#">188370</a>
<b>HGNC:</b>	1634
<b>KEGG:</b>	hsa:909
<b>Ensembl:</b>	ENSG00000158477
<b>String:</b>	<a href="#">9606.ENSP00000289429</a>

# Datasheet

Version: 2.0.0

Revision date: 13 Mar 2025



**Molecular Weight:** 37 kDa

**Buffer:** Ascitic fluid containing 0.03% sodium azide.

**Concentration:** Not determined.

**Note:** THIS PRODUCT IS FOR RESEARCH USE ONLY. NOT FOR USE IN DIAGNOSTIC, THERAPEUTIC OR COSMETIC PROCEDURES. NOT FOR HUMAN OR ANIMAL CONSUMPTION.

For Reference Only