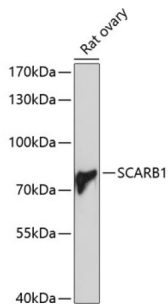


## Scavenger Receptor Class B Member 1 (SCARB1) Antibody

Catalogue No.: abx001334



Western blot analysis of extracts of Rat ovary using SCARB1 Antibody (1/1000 dilution).

SCARB1 Antibody is a Rabbit Polyclonal antibody against SCARB1. The protein encoded by this gene is a plasma membrane receptor for high density lipoprotein cholesterol (HDL). The encoded protein mediates cholesterol transfer to and from HDL. In addition, this protein is a receptor for hepatitis C virus glycoprotein E2. Two transcript variants encoding different isoforms have been found for this gene. [provided by RefSeq, Mar 2011].

<b>Target:</b>	Scavenger Receptor Class B Member 1 (SCARB1)
<b>Clonality:</b>	Polyclonal
<b>Reactivity:</b>	Human, Mouse, Rat
<b>Tested Applications:</b>	WB
<b>Host:</b>	Rabbit
<b>Recommended dilutions:</b>	WB: 1/500 - 1/2000. Optimal dilutions/concentrations should be determined by the end user.
<b>Conjugation:</b>	Unconjugated
<b>Immunogen:</b>	A synthetic peptide corresponding to human SCARB1
<b>Isotype:</b>	IgG
<b>Form:</b>	Liquid
<b>Purification:</b>	Purified by affinity chromatography.
<b>Storage:</b>	Aliquot and store at -20°C. Avoid repeated freeze/thaw cycles.
<b>UniProt Primary AC:</b>	Q8WTV0 ( <a href="#">UniProt</a> , <a href="#">ExPASy</a> )
<b>Gene Symbol:</b>	SCARB1

# Datasheet

Version: 4.0.0  
Revision date: 23 Apr 2025



**GeneID:** [949](#)

**NCBI Accession:** NP\_005496.4

**KEGG:** hsa:949

**String:** [9606.ENSP00000261693](#)

**Molecular Weight:** Calculated MW: 45 kDa/53 kDa/56 kDa/60 kDa  
Observed MW: 80 kDa

**Buffer:** PBS, pH 7.3, containing 0.02% sodium azide, 50% glycerol.

**Concentration:** 1 mg/ml

**Note:** THIS PRODUCT IS FOR RESEARCH USE ONLY. NOT FOR USE IN DIAGNOSTIC, THERAPEUTIC OR COSMETIC PROCEDURES. NOT FOR HUMAN OR ANIMAL CONSUMPTION.

For Reference Only