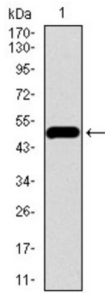
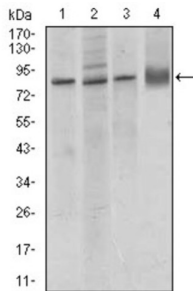


Cadherin 5 (CDH5) Antibody

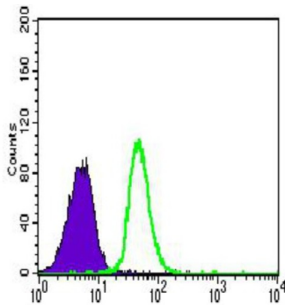
Catalogue No.: abx015810



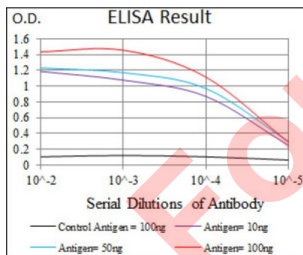
Western blot analysis using CDH5 antibody against human CDH5 recombinant protein. (Expected MW is 47.6 kDa).



Western blot analysis using CDH5 antibody against MCF-7 (1), A549 (2), HUVE-12 (3) cell lysate, and rat lung (4) tissue lysate.



Flow cytometric analysis of Jurkat cells using CDH5 antibody (green) and negative control (purple).



Red: Control Antigen (100ng) ; Purple: Antigen (10ng) ; Green: Antigen (50ng) ; Blue: Antigen (100ng).

This gene is a classical cadherin from the cadherin superfamily and is located in a six-cadherin cluster in a region on the long arm of chromosome 16 that is involved in loss of heterozygosity events in breast and prostate cancer. The encoded protein is a calcium-dependent cell-cell adhesion glycoprotein comprised of five extracellular cadherin repeats, a transmembrane region and a highly conserved cytoplasmic tail. Functioning as a classic cadherin by imparting to cells the ability to adhere in a homophilic manner, the protein may play an important role in endothelial cell biology through control of the cohesion and organization of the intercellular junctions. An alternative splice variant has been described but its full length sequence has not been determined.

Target: Cadherin 5 (CDH5)

Datasheet

Version: 2.0.0
Revision date: 13 Mar 2025



Clonality:	Monoclonal
Reactivity:	Human, Rat
Tested Applications:	ELISA, WB, FCM
Host:	Mouse
Recommended dilutions:	ELISA: 1/10000, WB: 1/500 - 1/2000, FCM: 1/200 - 1/400. Optimal dilutions/concentrations should be determined by the end user.
Conjugation:	Unconjugated
Immunogen:	Purified recombinant fragment of human CDH5 (AA: 29-223) expressed in E. coli.
Isotype:	IgG ₁
Form:	Liquid
Purification:	Purified from ascites by Protein G chromatography.
Storage:	Aliquot and store at -20°C. Avoid repeated freeze/thaw cycles.
GeneID:	1003 307618
Molecular Weight:	87.5 kDa
Buffer:	PBS, containing 0.05% sodium azide.
Concentration:	1 mg/ml
Note:	THIS PRODUCT IS FOR RESEARCH USE ONLY. NOT FOR USE IN DIAGNOSTIC, THERAPEUTIC OR COSMETIC PROCEDURES. NOT FOR HUMAN OR ANIMAL CONSUMPTION.