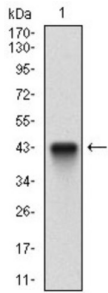
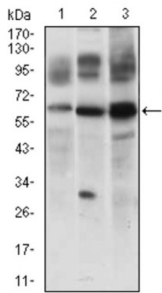


CASP8 And FADD Like Apoptosis Regulator (CFLAR) Antibody

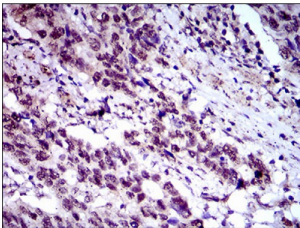
Catalogue No.: abx015816



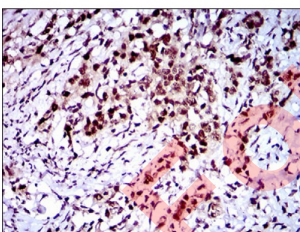
Western blot analysis using CFLAR antibody against human CFLAR recombinant protein. (Expected MW is 42.9 kDa).



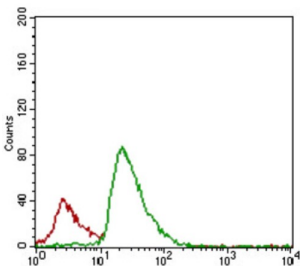
Western blot analysis using CFLAR antibody against JURKAT (1), 3T3L1 (2) and RAJI (3) cell lysate.



Flow cytometric analysis of JURKAT cells using CFLAR antibody (green) and negative control (red).



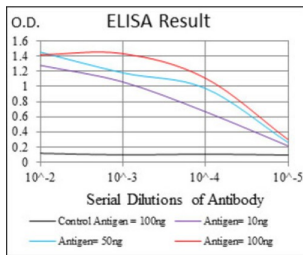
Immunohistochemical analysis of paraffin-embedded cervical cancer tissues using CFLAR antibody with DAB staining.



Immunohistochemical analysis of paraffin-embedded esophagus cancer tissues using CFLAR antibody with DAB staining.

Datasheet

Version: 3.0.0
Revision date: 20 Jan 2025



Red: Control Antigen (100ng) ; Purple: Antigen (10ng) ; Green: Antigen (50ng) ; Blue: Antigen (100ng).

The protein encoded by this gene is a regulator of apoptosis and is structurally similar to caspase-8. However, the encoded protein lacks caspase activity and appears to be itself cleaved into two peptides by caspase-8. Several transcript variants encoding different isoforms have been found for this gene, and partial evidence for several more variants exists.

Target:	CASP8 And FADD Like Apoptosis Regulator (CFLAR)
Clonality:	Monoclonal
Reactivity:	Human, Mouse
Tested Applications:	ELISA, WB, IHC, FCM
Host:	Mouse
Recommended dilutions:	ELISA: 1/10000, WB: 1/500 - 1/2000, IHC: 1/200 - 1/1000, FCM: 1/200 - 1/400. Optimal dilutions/concentrations should be determined by the end user.
Conjugation:	Unconjugated
Immunogen:	Purified recombinant fragment of human CFLAR (AA: 100-251) expressed in E. coli.
Isotype:	IgG ₁
Form:	Liquid
Purification:	Purified from ascites by Protein G chromatography.
Storage:	Aliquot and store at -20°C. Avoid repeated freeze/thaw cycles.
GeneID:	8837
Molecular Weight:	55 kDa
Buffer:	PBS, containing 0.05% sodium azide.

Datasheet

Version: 3.0.0

Revision date: 20 Jan 2025



Concentration: 1 mg/ml

Note: This product is for research use only.

For Reference Only