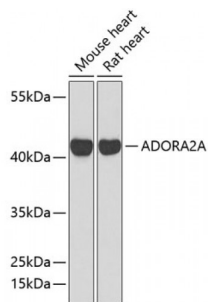
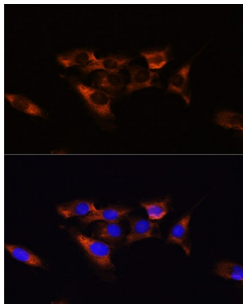


Adenosine A2a Receptor (ADORA2A) Antibody

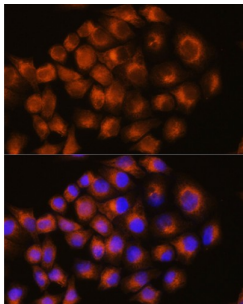
Catalogue No.: abx001337



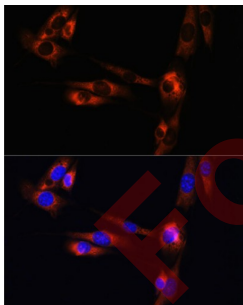
Western blot analysis of extracts of various cell lines, using ADORA2A antibody (1/1000 dilution).



Immunofluorescence analysis of C6 cells using ADORA2A antibody (1/100 dilution). Blue: DAPI for nuclear staining.



Immunofluorescence analysis of HeLa cells using ADORA2A antibody (1/100 dilution). Blue: DAPI for nuclear staining.



ADORA2A Antibody is a Rabbit Polyclonal antibody against ADORA2A. This gene encodes a protein which is one of several receptor subtypes for adenosine. The activity of the encoded protein, a G-protein coupled receptor family member, is mediated by G proteins which activate adenylyl cyclase. The encoded protein is abundant in basal ganglia, vasculature and platelets and it is a major target of caffeine. [provided by RefSeq, Jul 2008].

Target: Adenosine A2a Receptor (ADORA2A)

Clonality: Polyclonal

Datasheet

Version: 4.0.0
Revision date: 27 Jul 2024



Reactivity:	Human, Mouse, Rat
Tested Applications:	WB, IF/ICC
Host:	Rabbit
Recommended dilutions:	WB: 1/500 - 1/1000, IF/ICC: 1/50 - 1/200. Optimal dilutions/concentrations should be determined by the end user.
Conjugation:	Unconjugated
Immunogen:	A synthetic peptide corresponding to a sequence within amino acids 300-400 of human ADORA2A.
Isotype:	IgG
Form:	Liquid
Purification:	Purified by affinity chromatography.
Storage:	Aliquot and store at -20°C. Avoid repeated freeze/thaw cycles.
UniProt Primary AC:	P29274 (UniProt , ExPASy)
Gene Symbol:	ADORA2A
GeneID:	135
NCBI Accession:	NP_000666.2
KEGG:	hsa:135
String:	9606.ENSP00000480012
Molecular Weight:	Calculated MW: 45 kDa Observed MW: 43 kDa
Buffer:	PBS, pH 7.3, containing 0.02% sodium azide, 50% glycerol.
Concentration:	1.04 mg/ml
Note:	This product is for research use only.