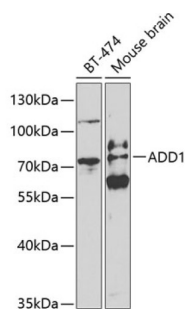


Alpha Adducin (ADD1) Antibody

Catalogue No.: abx001340



Western blot analysis of various lysates using ADD1 Antibody at 1/500 dilution. Secondary antibody: HRP-conjugated Goat anti-Rabbit IgG (H+L) at 1/10000 dilution. Lysates/proteins: 25 µg per lane. Blocking buffer: 3% nonfat dry milk in TBST.

Alpha Adducin (ADD1) Antibody is a Rabbit Polyclonal antibody against Alpha Adducin (ADD1). Adducin acts as a heterodimer of the related alpha, beta, or gamma subunits. The protein encoded by this gene represents the alpha subunit. Alpha- and beta-adducin include a protease-resistant N-terminal region and a protease-sensitive, hydrophilic C-terminal region. Adducin binds with high affinity to Ca(2+)/calmodulin and is a substrate for protein kinases A and C.

| | |
|-------------------------------|---|
| Target: | Alpha Adducin (ADD1) |
| Clonality: | Polyclonal |
| Reactivity: | Human, Mouse |
| Tested Applications: | ELISA, WB |
| Host: | Rabbit |
| Recommended dilutions: | ELISA: 1 µg/ml, WB: 1/500 - 1/2000. Optimal dilutions/concentrations should be determined by the end user. |
| Conjugation: | Unconjugated |
| Immunogen: | Recombinant fusion protein containing a sequence corresponding to amino acids 60-300 of human ADD1. |
| Isotype: | IgG |
| Form: | Liquid |
| Purification: | Purified by affinity chromatography. |
| Storage: | Aliquot and store at -20°C. Avoid repeated freeze/thaw cycles. |
| UniProt Primary AC: | P35611 (UniProt , ExPASy) Q9QYC0 (UniProt , ExPASy) |
| Gene Symbol: | ADD1 |

Datasheet

Version: 4.0.0
Revision date: 02 Feb 2025



GeneID: [118](#)

NCBI Accession: NP_001110.2, NM_001119.4

HGNC: 243

Ensembl: ENSG00000087274

String: [9606.ENSP00000264758](#) [10090.ENSMUSP00000109979](#)

Molecular Weight: Calculated MW: 81 kDa
Observed MW: 73 kDa

Buffer: PBS, pH 7.3, containing 0.02% sodium azide, 50% glycerol.

Concentration: > 0.2 mg/ml

Note: This product is for research use only.

For Reference Only