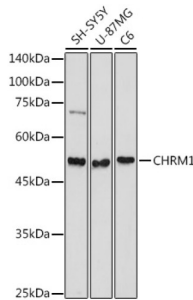
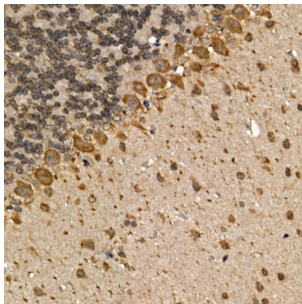


Muscarinic Acetylcholine Receptor M1 (CHRM1) Antibody

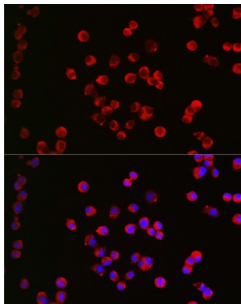
Catalogue No.: abx001345



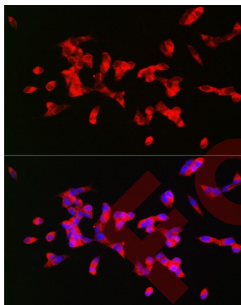
Western blot analysis of extracts of various cell lines using CHRM1 Antibody (1/1000 dilution).



Immunohistochemistry of paraffin-embedded mouse brain using CHRM1 Antibody (1/200 dilution, 40x lens). High pressure antigen retrieval was performed in 10 mM citrate buffer pH 6.0 before commencing with IHC staining protocol.



Immunofluorescence analysis of Neuro-2a cells using CHRM1 Antibody (1/200 dilution, 40x lens). Blue: DAPI for nuclear staining.



Immunofluorescence analysis of SH-SY5Y cells using CHRM1 Antibody (1/200 dilution, 40x lens). Blue: DAPI for nuclear staining.

CHRM1 Antibody is a Rabbit Polyclonal antibody against CHRM1. The muscarinic cholinergic receptors belong to a larger family of G protein-coupled receptors. The functional diversity of these receptors is defined by the binding of acetylcholine and includes cellular responses such as adenylate cyclase inhibition, phosphoinositide degeneration, and potassium channel mediation. Muscarinic receptors influence many effects of acetylcholine in the central and peripheral nervous system. The muscarinic cholinergic receptor 1 is involved in mediation of vagally-induced bronchoconstriction and in the acid secretion of the gastrointestinal tract. The gene encoding this receptor is localized to 11q13. [provided by RefSeq, Jul 2008].

Target: Muscarinic Acetylcholine Receptor M1 (CHRM1)

Datasheet

Version: 3.0.0
Revision date: 23 Feb 2025



| | |
|-------------------------------|--|
| Clonality: | Polyclonal |
| Reactivity: | Human, Mouse, Rat |
| Tested Applications: | WB, IHC, IF/ICC |
| Host: | Rabbit |
| Recommended dilutions: | WB: 1/500 - 1/2000, IHC-P: 1/500 - 1/2000, IF/ICC: 1/50 - 1/200. Not tested in IHC-F. Optimal dilutions/concentrations should be determined by the end user. |
| Conjugation: | Unconjugated |
| Immunogen: | A synthetic peptide corresponding to human CHRM1 |
| Isotype: | IgG |
| Form: | Liquid |
| Purification: | Purified by affinity chromatography. |
| Storage: | Aliquot and store at -20°C. Avoid repeated freeze/thaw cycles. |
| UniProt Primary AC: | P11229 (UniProt , ExPASy) |
| Gene Symbol: | CHRM1 |
| GeneID: | 1128 |
| NCBI Accession: | NP_000729.2 |
| KEGG: | hsa:1128 |
| String: | 9606.ENSP00000306490 |
| Molecular Weight: | Calculated MW: 50 kDa/51 kDa Observed MW: 51 kDa |
| Buffer: | PBS, pH 7.3, containing 0.01% thiomersal, 50% glycerol. |
| Concentration: | 1 mg/ml |
| Note: | This product is for research use only. |