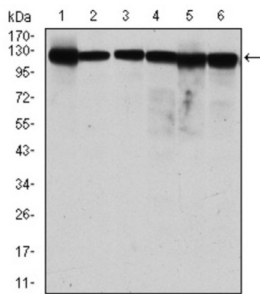
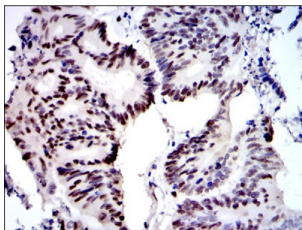


DNA Replication Licensing Factor MCM2 (MCM2) Antibody

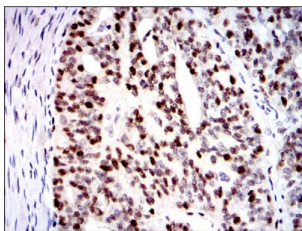
Catalogue No.: abx015924



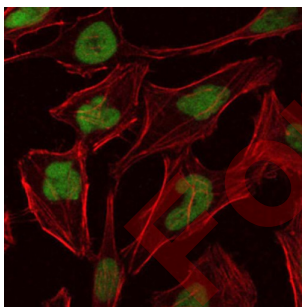
Western blot analysis using MCM2 antibody against human MCM2 (AA: 16-232) recombinant protein. (Expected MW is 50.4 kDa).



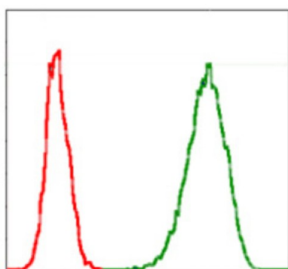
Western blot analysis using MCM2 antibody against MCF-7 (1), HeLa (2), Jurkat (3), K562 (4), HEK293 (5) and HEPG2 (6) cell lysate.



Immunohistochemical analysis of paraffin-embedded ovarian cancer tissues using MCM2 antibody with DAB staining.



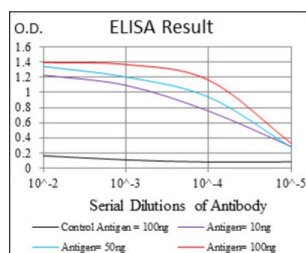
Immunohistochemical analysis of paraffin-embedded colon cancer tissues using MCM2 antibody with DAB staining.



Immunofluorescence analysis of HeLa cells using MCM2 antibody (green). Blue: DRAQ5 fluorescent DNA dye. Red: Actin filaments have been labeled with AF555 phalloidin.

Datasheet

Version: 4.0.0
Revision date: 13 Mar 2025



Flow cytometric analysis of Jurkat cells using MCM2 antibody (green) and negative control (red).

The protein encoded by this gene is one of the highly conserved mini-chromosome maintenance proteins (MCM) that are involved in the initiation of eukaryotic genome replication. The hexameric protein complex formed by MCM proteins is a key component of the pre-replication complex (pre_RC) and may be involved in the formation of replication forks and in the recruitment of other DNA replication related proteins. This protein forms a complex with MCM4, 6, and 7, and has been shown to regulate the helicase activity of the complex. This protein is phosphorylated, and thus regulated by, protein kinases CDC2 and CDC7.

| | |
|-------------------------------|---|
| Target: | DNA Replication Licensing Factor MCM2 (MCM2) |
| Clonality: | Monoclonal |
| Reactivity: | Human |
| Tested Applications: | ELISA, WB, IHC, IF/ICC, FCM |
| Host: | Mouse |
| Recommended dilutions: | ELISA: 1/10000, WB: 1/500 - 1/2000, IHC: 1/200 - 1/1000, IF/ICC: 1/200 - 1/1000, FCM: 1/200 - 1/400. Optimal dilutions/concentrations should be determined by the end user. |
| Conjugation: | Unconjugated |
| Immunogen: | Purified recombinant fragment of human MCM2 expressed in E. coli. |
| Isotype: | IgG ₁ |
| Form: | Liquid |
| Purification: | Unpurified ascites. |
| Storage: | Aliquot and store at -20°C. Avoid repeated freeze/thaw cycles. |
| UniProt Primary AC: | P49736 (UniProt , ExPASy) |
| Gene Symbol: | MCM2 |

Datasheet

Version: 4.0.0
Revision date: 13 Mar 2025



GeneID: [4171](#)

OMIM: [116945](#)

HGNC: 6944

KEGG: hsa:4171

Ensembl: ENSG00000073111

String: [9606.ENSP00000265056](#)

Molecular Weight: 125 kDa

Buffer: Ascitic fluid containing 0.03% sodium azide.

Concentration: Not determined.

Note: THIS PRODUCT IS FOR RESEARCH USE ONLY. NOT FOR USE IN DIAGNOSTIC, THERAPEUTIC OR COSMETIC PROCEDURES. NOT FOR HUMAN OR ANIMAL CONSUMPTION.

For Reference Only