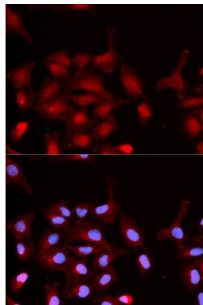


## ABL1 (pY245) Antibody

Catalogue No.: abx000091



Immunofluorescence analysis of MCF-7 cells using Phospho-ABL1-Y245 antibody (abx000091). Blue: DAPI for nuclear staining.

ABL1 (pY245) Antibody is a Rabbit Polyclonal antibody against ABL1 (pY245). The ABL1 protooncogene encodes a cytoplasmic and nuclear protein tyrosine kinase that has been implicated in processes of cell differentiation, cell division, cell adhesion, and stress response. Activity of c-Abl protein is negatively regulated by its SH3 domain, and deletion of the SH3 domain turns ABL1 into an oncogene. The t(9;22) translocation results in the head-to-tail fusion of the BCR (MIM:151410) and ABL1 genes present in many cases of chronic myelogenous leukemia. The DNA-binding activity of the ubiquitously expressed ABL1 tyrosine kinase is regulated by CDC2-mediated phosphorylation, suggesting a cell cycle function for ABL1. The ABL1 gene is expressed as either a 6- or 7-kb mRNA transcript, with alternatively spliced first exons spliced to the common exons 2-11.

<b>Target:</b>	ABL1 (pY245)
<b>Clonality:</b>	Polyclonal
<b>Reactivity:</b>	Human, Mouse, Rat
<b>Tested Applications:</b>	WB, IHC
<b>Host:</b>	Rabbit
<b>Recommended dilutions:</b>	WB: 1/500 - 1/2000, IHC-P: 1/50 - 1/200. Not tested in IHC-F. Optimal dilutions/concentrations should be determined by the end user.
<b>Conjugation:</b>	Unconjugated
<b>Immunogen:</b>	A synthetic phosphorylated peptide around Y245 of human ABL1.
<b>Isotype:</b>	IgG
<b>Form:</b>	Liquid
<b>Purification:</b>	Purified by affinity chromatography.
<b>Storage:</b>	Aliquot and store at -20°C. Avoid repeated freeze/thaw cycles.

# Datasheet

Version: 2.0.0  
Revision date: 03 Dec 2024



**UniProt Primary AC:** P00519 ([UniProt](#), [ExPASy](#))

**Gene Symbol:** ABL1

**GeneID:** [25](#)

**OMIM:** [189980](#)

**NCBI Accession:** NP\_005148.2

**HGNC:** 76

**KEGG:** hsa:25

**Ensembl:** ENSG00000097007

**String:** [9606.ENSP00000361423](#)

**Molecular Weight:** Calculated MW: 123 kDa  
Observed MW: 124 kDa

**Buffer:** PBS, pH 7.3, containing 0.01% thimerosal, 50% glycerol.

**Concentration:** > 0.2 mg/ml

**Note:** This product is for research use only.

For Reference Only