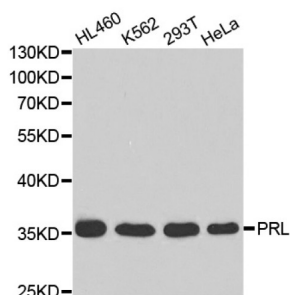


Prolactin (PRL) Antibody

Catalogue No.: abx001362



Western blot analysis of extracts of various cell lines, using PRL antibody (abx001362) at 1/1000 dilution.

Prolactin Antibody is a Rabbit Polyclonal antibody against Prolactin. This gene encodes the anterior pituitary hormone prolactin. This secreted hormone is a growth regulator for many tissues, including cells of the immune system. It may also play a role in cell survival by suppressing apoptosis, and it is essential for lactation. Alternative splicing results in multiple transcript variants that encode the same protein. [provided by RefSeq, Aug 2011].

Target:	Prolactin (PRL)
Clonality:	Polyclonal
Reactivity:	Human, Mouse, Rat
Tested Applications:	WB, IHC
Host:	Rabbit
Recommended dilutions:	WB: 1/500 - 1/1000, IHC-P: 1/500 - 1/1000. Not tested in IHC-F. Optimal dilutions/concentrations should be determined by the end user.
Conjugation:	Unconjugated
Immunogen:	Recombinant fusion protein containing a sequence corresponding to amino acids 29-227 of human PRL.
Isotype:	IgG
Form:	Liquid
Purification:	Purified by affinity chromatography.
Storage:	Aliquot and store at -20°C. Avoid repeated freeze/thaw cycles.
UniProt Primary AC:	P01236 (UniProt , ExpASY)
Gene Symbol:	PRL

Datasheet

Version: 3.0.0
Revision date: 18 Jan 2025



GeneID: [5617](#)

NCBI Accession: NP_001157030.1

KEGG: hsa:5617

String: [9606.ENSP00000302150](#)

Molecular Weight: Calculated MW: 26 kDa
Observed MW: 24 kDa

Buffer: PBS, pH 7.3, containing 0.05% Proclin-300, 50% glycerol.

Concentration: > 0.2 mg/ml

Note: This product is for research use only.

For Reference Only