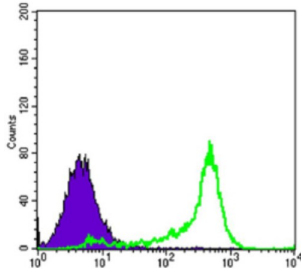
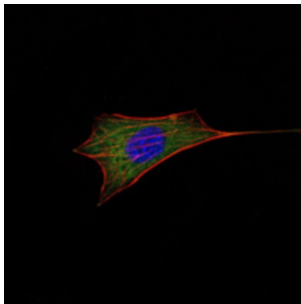


Apoptosis Regulator Bcl-2 (BCL2) Antibody

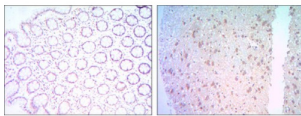
Catalogue No.: abx016080



Flow cytometric analysis of 3T3L1 cells using BCL2 antibody (green) and negative control (purple).



Immunofluorescence analysis of NIH/3T3 cells using BCL2 antibody (green). Blue: DRAQ5 fluorescent DNA dye. Red: Actin filaments have been labeled with AF555 phalloidin.



Immunohistochemical analysis of paraffin-embedded colon cancer tissues (left) and human brain tissues (right) using BCL2 antibody with DAB staining.

This gene encodes an integral outer mitochondrial membrane protein that blocks the apoptotic death of some cells such as lymphocytes. Constitutive expression of BCL2, such as in the case of translocation of BCL2 to Ig heavy chain locus, is thought to be the cause of follicular lymphoma. Tissue specificity: Expressed in a variety of tissues.

Target: Apoptosis Regulator Bcl-2 (BCL2)

Clonality: Monoclonal

Reactivity: Human, Mouse

Tested Applications: ELISA, IHC, IF/ICC, FCM

Host: Mouse

Recommended dilutions: ELISA: 1/10000, IHC: 1/200 - 1/1000, IF/ICC: 1/200 - 1/1000, FCM: 1/200 - 1/400. Optimal dilutions/concentrations should be determined by the end user.

Datasheet

Version: 1.0.0
Revision date: 15 Jan 2025



Conjugation:	Unconjugated
Immunogen:	Synthetic peptide corresponding to residues surrounding BCL-2, conjugated to KLH.
Isotype:	IgG ₁
Form:	Liquid
Purification:	Unpurified ascites.
Storage:	Aliquot and store at -20°C. Avoid repeated freeze/thaw cycles.
UniProt Primary AC:	P10415 (UniProt , ExPASy) P10417 (UniProt , ExPASy)
Gene Symbol:	BCL2
GeneID:	596 12043
OMIM:	151430
HGNC:	990
KEGG:	hsa:596
Ensembl:	ENSG00000171791
String:	9606.ENSP00000381185
Molecular Weight:	26 kDa
Buffer:	Ascitic fluid containing 0.03% sodium azide.
Concentration:	Not determined.
Note:	This product is for research use only.