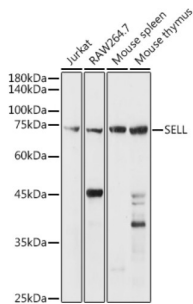
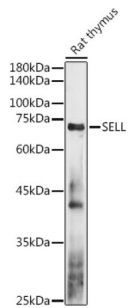


## L-Selectin / CD62L (SELL) Antibody

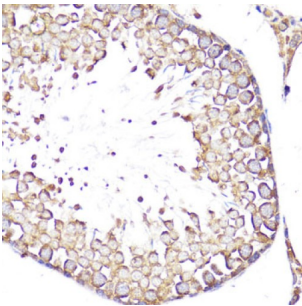
Catalogue No.: abx001366



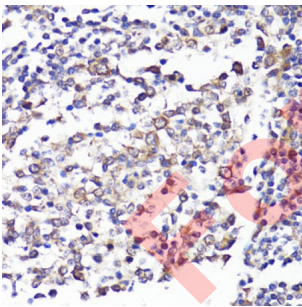
Western blot analysis of extracts of various cell lines using CD62L/L-Selectin Antibody (1/1000 dilution).



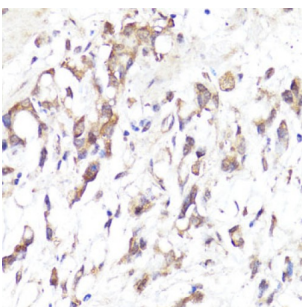
Western blot analysis of extracts of Rat thymus using CD62L/L-Selectin Antibody (1/1000 dilution).



Immunohistochemistry of paraffin-embedded rat testis using CD62L/L-Selectin antibody (1/100 dilution, 40x lens). Microwave antigen retrieval was performed in 10 mM PBS buffer pH 7.2 before commencing with IHC staining protocol.



Immunohistochemistry of paraffin-embedded human tonsil using CD62L/L-Selectin antibody (1/100 dilution, 40x lens). Microwave antigen retrieval was performed in 10 mM PBS buffer pH 7.2 before commencing with IHC staining protocol.



Immunohistochemistry of paraffin-embedded human gastric cancer using CD62L/L-Selectin antibody (1/100 dilution, 40x lens). Microwave antigen retrieval was performed in 10 mM PBS buffer pH 7.2 before commencing with IHC staining protocol.

# Datasheet

Version: 5.0.0  
Revision date: 23 Feb 2025



SELL Antibody is a Rabbit Polyclonal antibody against SELL. This gene encodes a cell surface adhesion molecule that belongs to a family of adhesion/homing receptors. The encoded protein contains a C-type lectin-like domain, a calcium-binding epidermal growth factor-like domain, and two short complement-like repeats. The gene product is required for binding and subsequent rolling of leucocytes on endothelial cells, facilitating their migration into secondary lymphoid organs and inflammation sites. Single-nucleotide polymorphisms in this gene have been associated with various diseases including immunoglobulin A nephropathy. Alternatively spliced transcript variants have been found for this gene. [provided by RefSeq, Oct 2009].

<b>Target:</b>	L-Selectin / CD62L (SELL)
<b>Clonality:</b>	Polyclonal
<b>Reactivity:</b>	Human, Mouse, Rat
<b>Tested Applications:</b>	WB, IHC
<b>Host:</b>	Rabbit
<b>Recommended dilutions:</b>	WB: 1/500 - 1/2000, IHC-P: 1/50 - 1/200. Not tested in IHC-F. Optimal dilutions/concentrations should be determined by the end user.
<b>Conjugation:</b>	Unconjugated
<b>Immunogen:</b>	A synthetic peptide corresponding to human SELL
<b>Isotype:</b>	IgG
<b>Form:</b>	Liquid
<b>Purification:</b>	Purified by affinity chromatography.
<b>Storage:</b>	Aliquot and store at -20°C. Avoid repeated freeze/thaw cycles.
<b>UniProt Primary AC:</b>	P14151 ( <a href="#">UniProt</a> , <a href="#">ExPASy</a> )
<b>Gene Symbol:</b>	SELL
<b>GeneID:</b>	<a href="#">6402</a>
<b>NCBI Accession:</b>	NP_000646.2
<b>Molecular Weight:</b>	Calculated MW: 42 kDa/43 kDa Observed MW: 75 kDa
<b>Buffer:</b>	PBS, pH 7.3, containing 0.01% thiomersal, 50% glycerol.
<b>Concentration:</b>	1 mg/ml

# Datasheet

Version: 5.0.0

Revision date: 23 Feb 2025



**Note:** This product is for research use only.

For Reference Only