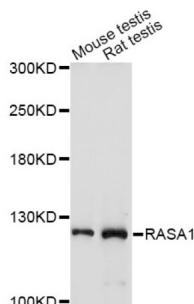


Ras GTPase-Activating Protein 1 (RASA1) Antibody

Catalogue No.: abx001377



Western blot analysis of extracts of various cell lines, using RASA1 antibody (abx001377) at 1/1000 dilution.

RASA1 Antibody is a Rabbit Polyclonal antibody against RASA1. The protein encoded by this gene is located in the cytoplasm and is part of the GAP1 family of GTPase-activating proteins. The gene product stimulates the GTPase activity of normal RAS p21 but not its oncogenic counterpart. Acting as a suppressor of RAS function, the protein enhances the weak intrinsic GTPase activity of RAS proteins resulting in the inactive GDP-bound form of RAS, thereby allowing control of cellular proliferation and differentiation. Mutations leading to changes in the binding sites of either protein are associated with basal cell carcinomas. Mutations also have been associated with hereditary capillary malformations (CM) with or without arteriovenous malformations (AVM) and Parkes Weber syndrome. Alternative splicing results in two isoforms where the shorter isoform, lacking the N-terminal hydrophobic region but retaining the same activity, appears to be abundantly expressed in placental but not adult tissues. [provided by RefSeq, May 2012].

Target:	Ras GTPase-Activating Protein 1 (RASA1)
Clonality:	Polyclonal
Reactivity:	Human, Mouse, Rat
Tested Applications:	WB
Host:	Rabbit
Recommended dilutions:	WB: 1/500 - 1/2000. Optimal dilutions/concentrations should be determined by the end user.
Conjugation:	Unconjugated
Immunogen:	Recombinant fusion protein containing a sequence corresponding to amino acids 140-220 of human RASA1.
Isotype:	IgG
Form:	Liquid
Purification:	Purified by affinity chromatography.
Storage:	Aliquot and store at -20°C. Avoid repeated freeze/thaw cycles.

Datasheet

Version: 3.0.0
Revision date: 16 Nov 2024



UniProt Primary AC: P20936 ([UniProt](#), [ExPASy](#))

Gene Symbol: RASA1

GeneID: [5921](#)

NCBI Accession: NP_002881.1

KEGG: hsa:5921

String: [9606.ENSP00000274376](#)

Molecular Weight: Calculated MW: 116 kDa
Observed MW: 125 kDa

Buffer: PBS, pH 7.3, containing 0.01% thimerosal, 50% glycerol.

Concentration: > 0.2 mg/ml

Note: This product is for research use only.

For Reference Only