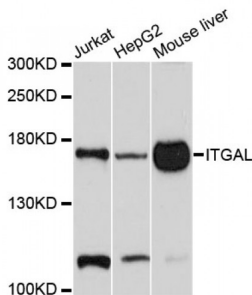


Integrin Alpha-L (ITGAL) Antibody

Catalogue No.: abx001384



Western blot analysis of extracts of various cell lines, using ITGAL antibody (abx001384) at 1/1000 dilution.

ITGAL Antibody is a Rabbit Polyclonal antibody against ITGAL. ITGAL encodes the integrin alpha L chain. Integrins are heterodimeric integral membrane proteins composed of an alpha chain and a beta chain. This I-domain containing alpha integrin combines with the beta 2 chain (ITGB2) to form the integrin lymphocyte function-associated antigen-1 (LFA-1), which is expressed on all leukocytes. LFA-1 plays a central role in leukocyte intercellular adhesion through interactions with its ligands, ICAMs 1-3 (intercellular adhesion molecules 1 through 3), and also functions in lymphocyte costimulatory signaling. Two transcript variants encoding different isoforms have been found for this gene.

Target:	Integrin Alpha-L (ITGAL)
Clonality:	Polyclonal
Reactivity:	Human, Mouse, Rat
Tested Applications:	WB, IHC, IF/ICC
Host:	Rabbit
Recommended dilutions:	WB: 1/100 - 1/500, IHC-P: 1/50 - 1/100, IF/ICC: 1/50 - 1/100. Not tested in IHC-F. Optimal dilutions/concentrations should be determined by the end user.
Conjugation:	Unconjugated
Immunogen:	Recombinant fusion protein containing a sequence corresponding to amino acids 26-340 of human CD11a/LFA-1A/ITGAL.
Isotype:	IgG
Form:	Liquid
Purification:	Purified by affinity chromatography.
Storage:	Aliquot and store at -20°C. Avoid repeated freeze/thaw cycles.
UniProt Primary AC:	P20701 (UniProt , ExPASy)

Datasheet

Version: 2.0.0

Revision date: 01 Sep 2024



Gene Symbol: ITGAL

GeneID: [3683](#)

NCBI Accession: NP_001107852.1

KEGG: hsa:3683

String: [9606.ENSP00000349252](#)

Molecular Weight: Calculated MW: 129 kDa
Observed MW: 180 kDa

Buffer: PBS, pH 7.3, containing 0.05% Proclin-300, 50% glycerol.

Concentration: > 0.2 mg/ml

Note: This product is for research use only.

For Reference Only