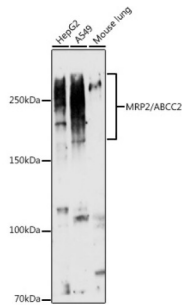
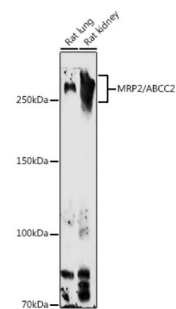


ATP Binding Cassette Transporter C2 (ABCC2) Antibody

Catalogue No.: abx005827



Western blot analysis of various lysates using MRP2/ABCC2 Antibody at 1/1000 dilution. Secondary antibody: HRP-conjugated Goat anti-Rabbit IgG (H+L) at 1/10000 dilution. Lysates/proteins: 25 µg per lane. Blocking buffer: 3% nonfat dry milk in TBST. Exposure time: 30s.



Western blot analysis of various lysates using MRP2/ABCC2 Antibody at 1/1000 dilution. Secondary antibody: HRP-conjugated Goat anti-Rabbit IgG (H+L) at 1/10000 dilution. Lysates/proteins: 25 µg per lane. Blocking buffer: 3% nonfat dry milk in TBST. Exposure time: 90s.

ATP Binding Cassette Transporter C2 (ABCC2) Antibody is a Rabbit Polyclonal Antibody against ATP Binding Cassette Transporter C2 (ABCC2).

Target:	ATP Binding Cassette Transporter C2 (ABCC2)
Clonality:	Polyclonal
Reactivity:	Human, Mouse, Rat
Tested Applications:	ELISA, WB, IF/ICC
Host:	Rabbit
Recommended dilutions:	ELISA: 1 µg/ml, WB: 1/500 - 1/1000, IF/ICC: 1/50 - 1/200. Optimal dilutions/concentrations should be determined by the end user.
Conjugation:	Unconjugated
Immunogen:	Recombinant fusion protein containing a sequence corresponding to amino acids 180-315 of human MRP2/ABCC2.
Isotype:	IgG
Form:	Liquid

Datasheet

Version: 4.0.0
Revision date: 28 Jan 2025



Purification:	Purified by affinity chromatography.
Storage:	Aliquot and store at -20°C. Avoid repeated freeze/thaw cycles.
UniProt Primary AC:	Q92887 (UniProt , ExPASy)
Gene Symbol:	ABCC2
GeneID:	1244
NCBI Accession:	NP_000383.1
KEGG:	hsa:1244
String:	9606.ENSP00000359478
Molecular Weight:	Calculated MW: 174 kDa Observed MW: 200 kDa-270 kDa
Buffer:	PBS, pH 7.3, containing 0.09% sodium azide, 50% glycerol.
Concentration:	> 0.2 mg/ml
Note:	This product is for research use only.

For Reference Only