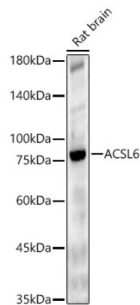


Datasheet

Version: 4.0.0
Revision date: 23 Feb 2025

Long-Chain-Fatty-Acid-CoA Ligase 6 (ACSL6) Antibody

Catalogue No.: abx006590



Western blot analysis of lysates from Rat brain, using ACSL6 Antibody at 1/2000 dilution. Secondary antibody: HRP-conjugated Goat anti-Rabbit IgG (H+L) at 1/10000 dilution. Lysates/proteins: 25 µg per lane. Blocking buffer: 3% nonfat dry milk in TBST. Exposure time: 60s.

ACSL6 Antibody is a Rabbit Polyclonal Antibody against ACSL6.

Target:	Long-Chain-Fatty-Acid-CoA Ligase 6 (ACSL6)
Clonality:	Polyclonal
Reactivity:	Human, Mouse, Rat
Tested Applications:	ELISA, WB
Host:	Rabbit
Recommended dilutions:	ELISA: 1 µg/ml, WB: 1/500 - 1/2000. Optimal dilutions/concentrations should be determined by the end user.
Conjugation:	Unconjugated
Immunogen:	Recombinant fusion protein containing a sequence corresponding to amino acids 383-622 of human ACSL6.
Isotype:	IgG
Form:	Liquid
Purification:	Purified by affinity chromatography.
Storage:	Aliquot and store at -20°C. Avoid repeated freeze/thaw cycles.
UniProt Primary AC:	Q9UKU0 (UniProt , ExPASy)
Gene Symbol:	ACSL6
GeneID:	23305

Datasheet

Version: 4.0.0
Revision date: 23 Feb 2025



NCBI Accession: NP_001192180.1

String: [9606.ENSF00000368566](#)

Molecular Weight: Calculated MW: 78 kDa
Observed MW: 77 kDa

Buffer: PBS, pH 7.3, containing 0.02% sodium azide, 50% glycerol.

Concentration: 1.35 mg/ml

Note: This product is for research use only.

For Reference Only