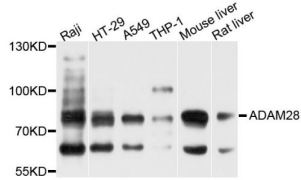


ADAM Metallopeptidase Domain 28 (ADAM28) Antibody

Catalogue No.: abx124064



Western blot analysis of extracts of various cell lines, using ADAM28 antibody (abx124064) at 1/1000 dilution.

ADAM28 Antibody is a Rabbit Polyclonal Antibody against ADAM28.

Target:	ADAM Metallopeptidase Domain 28 (ADAM28)
Clonality:	Polyclonal
Reactivity:	Human, Mouse, Rat
Tested Applications:	WB
Host:	Rabbit
Recommended dilutions:	WB: 1/500 - 1/2000. Optimal dilutions/concentrations should be determined by the end user.
Conjugation:	Unconjugated
Immunogen:	Recombinant fusion protein containing a sequence corresponding to amino acids 199-440 of human ADAM28.
Isotype:	IgG
Form:	Liquid
Purification:	Purified by affinity chromatography.
Storage:	Aliquot and store at -20°C. Avoid repeated freeze/thaw cycles.
UniProt Primary AC:	Q9UKQ2 (UniProt , ExPASy)
Gene Symbol:	ADAM28
GeneID:	10863

Datasheet

Version: 1.0.0
Revision date: 22 Nov 2024



NCBI Accession:	NP_055080.2
Molecular Weight:	Calculated MW: 87 kDa Observed MW: 87 kDa
Buffer:	PBS, pH 7.3, containing 0.02% sodium azide, 50% glycerol.
Concentration:	> 0.2 mg/ml
Note:	This product is for research use only.

For Reference Only