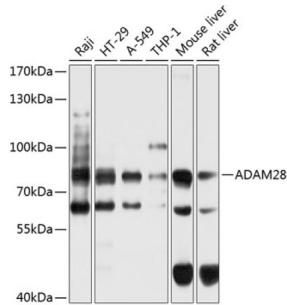


ADAM Metallopeptidase Domain 28 (ADAM28) Antibody

Catalogue No.: abx124064



Western blot analysis of various lysates using ADAM28 Antibody at 1/1000 dilution. Secondary antibody: HRP-conjugated Goat anti-Rabbit IgG (H+L) at 1/10000 dilution. Lysates/proteins: 25 µg per lane. Blocking buffer: 3% nonfat dry milk in TBST. Exposure time: 5s.

ADAM28 Antibody is a Rabbit Polyclonal Antibody against ADAM28.

Target:	ADAM Metallopeptidase Domain 28 (ADAM28)
Clonality:	Polyclonal
Reactivity:	Human, Mouse, Rat
Tested Applications:	ELISA, WB
Host:	Rabbit
Recommended dilutions:	ELISA: 1 µg/ml, WB: 1/500 - 1/2000. Optimal dilutions/concentrations should be determined by the end user.
Conjugation:	Unconjugated
Immunogen:	Recombinant fusion protein containing a sequence corresponding to amino acids 199-440 of human ADAM28.
Isotype:	IgG
Form:	Liquid
Purification:	Purified by affinity chromatography.
Storage:	Aliquot and store at -20°C. Avoid repeated freeze/thaw cycles.
UniProt Primary AC:	Q9UKQ2 (UniProt , ExpASY)
Gene Symbol:	ADAM28
GeneID:	10863

Datasheet

Version: 2.0.0
Revision date: 23 Feb 2025



NCBI Accession: NP_055080.2

Molecular Weight: Calculated MW: 87 kDa
Observed MW: 87 kDa

Buffer: PBS, pH 7.3, containing 0.02% sodium azide, 50% glycerol.

Concentration: > 0.2 mg/ml

Note: This product is for research use only.

For Reference Only