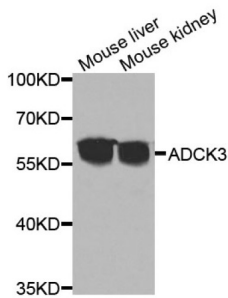
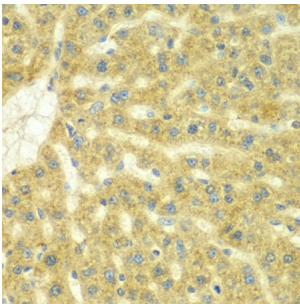


## Atypical Kinase COQ8A, Mitochondrial (ADCK3) Antibody

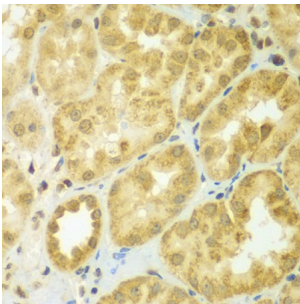
Catalogue No.: abx006933



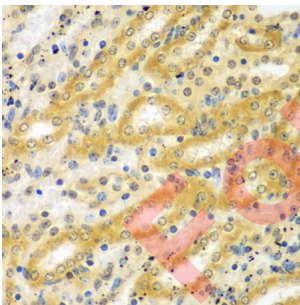
Western blot analysis of extracts of various cell lines, using ADCK3 antibody (abx006933) at 1/1000 dilution.



Immunohistochemistry of paraffin-embedded rat liver using ADCK3 antibody (abx006933) at dilution of 1/100 (40x lens).



Immunohistochemistry of paraffin-embedded human kidney using ADCK3 antibody (abx006933) at dilution of 1/100 (40x lens).



Immunohistochemistry of paraffin-embedded mouse kidney using ADCK3 antibody (abx006933) at dilution of 1/100 (40x lens).

ADCK3 Antibody is a Rabbit Polyclonal Antibody against ADCK3.

**Target:** Atypical Kinase COQ8A, Mitochondrial (ADCK3)

**Clonality:** Polyclonal

**Reactivity:** Human, Mouse, Rat

# Datasheet

Version: 2.0.0  
Revision date: 06 Oct 2024



<b>Tested Applications:</b>	WB
<b>Host:</b>	Rabbit
<b>Recommended dilutions:</b>	WB: 1/500 - 1/2000. Optimal dilutions/concentrations should be determined by the end user.
<b>Conjugation:</b>	Unconjugated
<b>Immunogen:</b>	Recombinant fusion protein containing a sequence corresponding to amino acids 1-220 of human ADCK3.
<b>Isotype:</b>	IgG
<b>Form:</b>	Liquid
<b>Purification:</b>	Purified by affinity chromatography.
<b>Storage:</b>	Aliquot and store at -20°C. Avoid repeated freeze/thaw cycles.
<b>UniProt Primary AC:</b>	Q8NI60 ( <a href="#">UniProt</a> , <a href="#">ExPASy</a> )
<b>Gene Symbol:</b>	COQ8A
<b>GeneID:</b>	<a href="#">56997</a>
<b>NCBI Accession:</b>	NP_064632.2
<b>KEGG:</b>	hsa:56997
<b>String:</b>	<a href="#">9606.ENSP00000355741</a>
<b>Molecular Weight:</b>	Calculated MW: 72 kDa Observed MW: 55 kDa
<b>Buffer:</b>	PBS, pH 7.3, containing 0.02% sodium azide, 50% glycerol.
<b>Concentration:</b>	> 0.2 mg/ml
<b>Note:</b>	This product is for research use only.