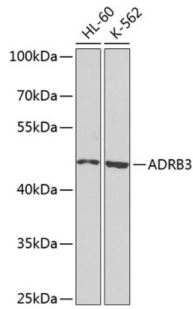
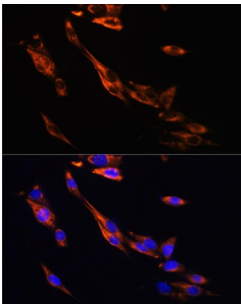


## Adrenergic Receptor Beta 3 (ADRB3) Antibody

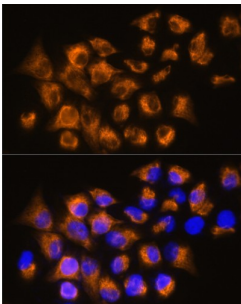
Catalogue No.: abx123760



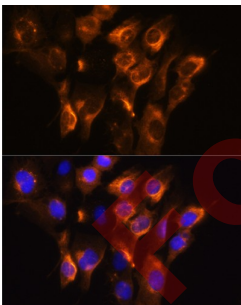
Western blot analysis of extracts of various cell lines, using ADRB3 antibody (1/1000 dilution).



IF analysis of NIH/3T3 cells, using ADRB3 antibody (1/100 dilution). Blue: DAPI for nuclear staining.



IF analysis of HeLa cells, using ADRB3 antibody (1/100 dilution). Blue: DAPI for nuclear staining.



IF analysis of C6 cells, using ADRB3 antibody (1/100 dilution). Blue: DAPI for nuclear staining.

ADRB3 Antibody is a Rabbit Polyclonal Antibody against ADRB3.

**Target:** Adrenergic Receptor Beta 3 (ADRB3)

**Clonality:** Polyclonal

**Reactivity:** Human, Mouse, Rat

# Datasheet

Version: 2.0.0  
Revision date: 03 Dec 2024



<b>Tested Applications:</b>	WB, IF/ICC
<b>Host:</b>	Rabbit
<b>Recommended dilutions:</b>	WB: 1/500 - 1/2000, IF/ICC: 1/50 - 1/200. Optimal dilutions/concentrations should be determined by the end user.
<b>Conjugation:</b>	Unconjugated
<b>Immunogen:</b>	A synthetic peptide corresponding to a sequence within amino acids 1-100 of human ADRB3.
<b>Isotype:</b>	IgG
<b>Form:</b>	Liquid
<b>Purification:</b>	Purified by affinity chromatography.
<b>Storage:</b>	Aliquot and store at -20°C. Avoid repeated freeze/thaw cycles.
<b>UniProt Primary AC:</b>	P13945 ( <a href="#">UniProt</a> , <a href="#">ExPASy</a> )
<b>Gene Symbol:</b>	ADRB3
<b>GeneID:</b>	<a href="#">155</a>
<b>NCBI Accession:</b>	NP_000016.1
<b>KEGG:</b>	hsa:155
<b>String:</b>	<a href="#">9606.ENSP00000343782</a>
<b>Molecular Weight:</b>	Calculated MW: 44 kDa Observed MW: 47 kDa
<b>Buffer:</b>	PBS, pH 7.3, containing 0.02% sodium azide, 50% glycerol.
<b>Concentration:</b>	2.18 mg/ml
<b>Note:</b>	This product is for research use only.