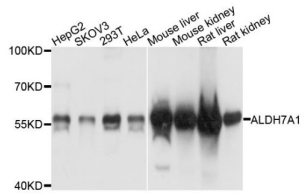


Aldehyde Dehydrogenase 7 Family Member A1 (ALDH7A1) Antibody

Catalogue No.: abx123905



Western blot analysis of extracts of various cell lines, using ALDH7A1 antibody (abx123905) at 1/1000 dilution.

ALDH7A1 Antibody is a Rabbit Polyclonal Antibody against ALDH7A1.

Target:	Aldehyde Dehydrogenase 7 Family Member A1 (ALDH7A1)
Clonality:	Polyclonal
Reactivity:	Human, Mouse, Rat
Tested Applications:	WB, IHC, IF/ICC
Host:	Rabbit
Recommended dilutions:	WB: 1/100 - 1/500, IHC-P: 1/50 - 1/200, IF/ICC: 1/50 - 1/200. Not tested in IHC-F. Optimal dilutions/concentrations should be determined by the end user.
Conjugation:	Unconjugated
Immunogen:	Recombinant fusion protein containing a sequence corresponding to amino acids 430-539 of human ALDH7A1.
Isotype:	IgG
Form:	Liquid
Purification:	Purified by affinity chromatography.
Storage:	Aliquot and store at -20°C. Avoid repeated freeze/thaw cycles.
UniProt Primary AC:	P49419 (UniProt , ExpASY)
Gene Symbol:	ALDH7A1
GeneID:	501

Datasheet

Version: 2.0.0
Revision date: 03 Dec 2024



NCBI Accession:	NP_001173.2
Molecular Weight:	Calculated MW: 58 kDa Observed MW: 58 kDa
Buffer:	PBS, pH 7.3, containing 0.02% sodium azide, 50% glycerol.
Concentration:	> 0.2 mg/ml
Note:	This product is for research use only.

For Reference Only