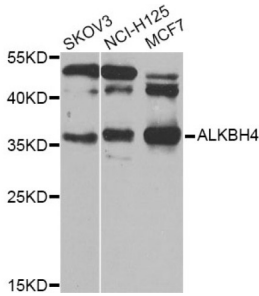
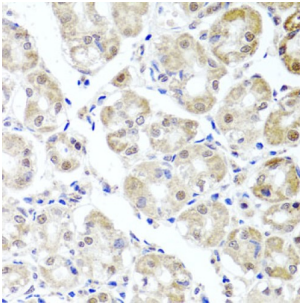


AlkB Homolog 4, Lysine Demethylase (ALKBH4) Antibody

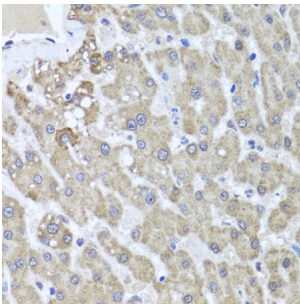
Catalogue No.: abx006246



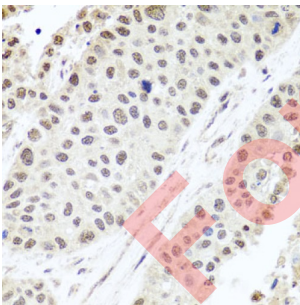
Western blot analysis of extracts of various cell lines, using ALKBH4 Antibody (abx006246) at 1/1000 dilution.



Immunohistochemistry of paraffin-embedded human stomach using ALKBH4 antibody (abx006246) at dilution of 1/100 (40x lens).



Immunohistochemistry of paraffin-embedded human liver injury using ALKBH4 antibody (abx006246) at dilution of 1/100 (40x lens).



Immunohistochemistry of paraffin-embedded human lung cancer using ALKBH4 antibody (abx006246) at dilution of 1/100 (40x lens).

ALKBH4 Antibody is a Rabbit Polyclonal Antibody against ALKBH4.

Target: AlkB Homolog 4, Lysine Demethylase (ALKBH4)

Clonality: Polyclonal

Reactivity: Human

Datasheet

Version: 4.0.0
Revision date: 31 Dec 2024



Tested Applications:	WB
Host:	Rabbit
Recommended dilutions:	WB: 1/500 - 1/2000. Optimal dilutions/concentrations should be determined by the end user.
Conjugation:	Unconjugated
Immunogen:	Recombinant fusion protein containing a sequence corresponding to amino acids 1-170 of human ALKBH4.
Isotype:	IgG
Form:	Liquid
Purification:	Purified by affinity chromatography.
Storage:	Aliquot and store at -20°C. Avoid repeated freeze/thaw cycles.
UniProt Primary AC:	Q9NXW9 (UniProt , ExPASy)
Gene Symbol:	ALKBH4
GeneID:	54784
NCBI Accession:	NP_060091.1
String:	9606.ENSP00000292566
Enzyme Commission Number:	EC 1.14.11.-
Molecular Weight:	Calculated MW: 34 kDa Observed MW: 36 kDa
Buffer:	PBS, pH 7.3, containing 0.02% sodium azide, 50% glycerol.
Concentration:	> 0.2 mg/ml
Note:	This product is for research use only.