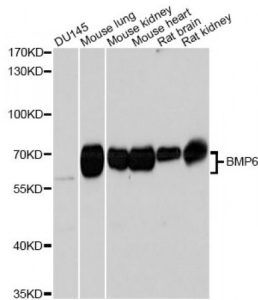


Bone Morphogenetic Protein 6 (BMP6) Antibody

Catalogue No.: abx006196



Western blot analysis of extracts of various cell lines, using BMP6 Antibody (abx006196) at 1/1000 dilution.

BMP6 Antibody is a Rabbit Polyclonal Antibody against BMP6.

Target:	Bone Morphogenetic Protein 6 (BMP6)
Clonality:	Polyclonal
Reactivity:	Human, Mouse, Rat
Tested Applications:	WB
Host:	Rabbit
Recommended dilutions:	WB: 1/500 - 1/2000. Optimal dilutions/concentrations should be determined by the end user.
Conjugation:	Unconjugated
Immunogen:	A synthetic peptide corresponding to a sequence within amino acids 375-513 of human BMP6.
Isotype:	IgG
Form:	Liquid
Purification:	Purified by affinity chromatography.
Storage:	Aliquot and store at -20°C. Avoid repeated freeze/thaw cycles.
UniProt Primary AC:	P22004 (UniProt , ExpASY)
Gene Symbol:	BMP6
GeneID:	654

Datasheet

Version: 2.0.0

Revision date: 01 Sep 2024



NCBI Accession: NP_001709.1

KEGG: hsa:654

String: [9606.ENSP00000283147](#)

Molecular Weight: Calculated MW: 57 kDa
Observed MW: 57 kDa

Buffer: PBS, pH 7.3, containing 0.02% sodium azide, 50% glycerol.

Concentration: > 0.2 mg/ml

Note: This product is for research use only.

For Reference Only