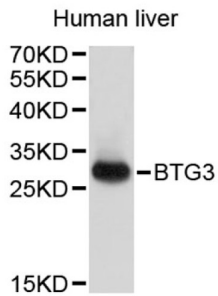


Protein BTG3 (BTG3) Antibody

Catalogue No.: abx006733



Western blot analysis of extracts of human liver, using BTG3 antibody (abx006733).

BTG3 Antibody is a Rabbit Polyclonal Antibody against BTG3.

Target:	Protein BTG3 (BTG3)
Clonality:	Polyclonal
Reactivity:	Human
Tested Applications:	WB
Host:	Rabbit
Recommended dilutions:	WB: 1/200 - 1/1000. Optimal dilutions/concentrations should be determined by the end user.
Conjugation:	Unconjugated
Immunogen:	Recombinant fusion protein containing a sequence corresponding to amino acids 150-250 of human BTG3.
Isotype:	IgG
Form:	Liquid
Purification:	Purified by affinity chromatography.
Storage:	Aliquot and store at -20°C. Avoid repeated freeze/thaw cycles.
UniProt Primary AC:	Q14201 (UniProt , ExPASy)
Gene Symbol:	BTG3
GeneID:	10950

Datasheet

Version: 5.0.0

Revision date: 04 Dec 2024



NCBI Accession:	NP_006797.3
KEGG:	hsa:10950
Molecular Weight:	Calculated MW: 29 kDa Observed MW: 29 kDa
Buffer:	PBS, pH 7.3, containing 0.05% Proclin-300, 50% glycerol.
Concentration:	> 0.2 mg/ml
Note:	This product is for research use only.

For Reference Only