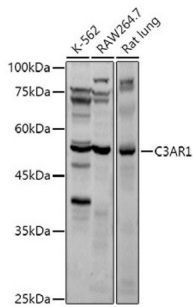


Complement Component C3a Receptor (C3AR1) Antibody

Catalogue No.: abx006344



Western blot analysis of extracts of various cell lines using C3AR1 Antibody (1/1000 dilution).

C3AR1 Antibody is a Rabbit Polyclonal Antibody against C3AR1.

Target:	Complement Component C3a Receptor (C3AR1)
Clonality:	Polyclonal
Reactivity:	Human, Mouse, Rat
Tested Applications:	WB
Host:	Rabbit
Recommended dilutions:	WB: 1/500 - 1/2000. Optimal dilutions/concentrations should be determined by the end user.
Conjugation:	Unconjugated
Immunogen:	Recombinant fusion protein corresponding to human C3AR1
Isotype:	IgG
Form:	Liquid
Purification:	Purified by affinity chromatography.
Storage:	Aliquot and store at -20°C. Avoid repeated freeze/thaw cycles.
UniProt Primary AC:	Q16581 (UniProt , ExPASy)
Gene Symbol:	C3AR1
GeneID:	719

Datasheet

Version: 6.0.0
Revision date: 23 Feb 2025



NCBI Accession: NP_004045.1

KEGG: hsa:719

String: [9606.ENSP00000302079](#)

Molecular Weight: Calculated MW: 53 kDa
Observed MW: 50 kDa

Buffer: PBS, pH 7.3, containing 0.01% thiomersal, 50% glycerol.

Concentration: 1 mg/ml

Note: This product is for research use only.

For Reference Only