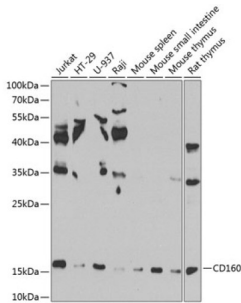


Cluster of Differentiation 160 (CD160) Antibody

Catalogue No.: abx005726



Western blot analysis of various lysates using CD160 Antibody at 1/1000 dilution. Secondary antibody: HRP-conjugated Goat anti-Rabbit IgG (H+L) at 1/10000 dilution. Lysates/proteins: 25 µg per lane. Blocking buffer: 3% nonfat dry milk in TBST. Exposure time: 90s.

CD160 Antibody is a Rabbit Polyclonal Antibody against CD160.

Target:	Cluster of Differentiation 160 (CD160)
Clonality:	Polyclonal
Reactivity:	Human, Mouse, Rat
Tested Applications:	ELISA, WB
Host:	Rabbit
Recommended dilutions:	ELISA: 1 µg/ml, WB: 1/500 - 1/2000. Optimal dilutions/concentrations should be determined by the end user.
Conjugation:	Unconjugated
Immunogen:	Recombinant fusion protein containing a sequence corresponding to amino acids 1-181 of human CD160.
Isotype:	IgG
Form:	Liquid
Purification:	Purified by affinity chromatography.
Storage:	Aliquot and store at -20°C. Avoid repeated freeze/thaw cycles.
UniProt Primary AC:	O95971 (UniProt , ExpASY)
Gene Symbol:	CD160
GeneID:	11126

Datasheet

Version: 3.0.0

Revision date: 11 Feb 2025



NCBI Accession: NP_008984.1

KEGG: hsa:11126

String: [9606.ENSP00000235933](#)

Molecular Weight: Calculated MW: 20 kDa
Observed MW: 20 kDa

Buffer: PBS, pH 7.3, containing 0.02% sodium azide, 50% glycerol.

Concentration: > 0.2 mg/ml

Note: This product is for research use only.

For Reference Only