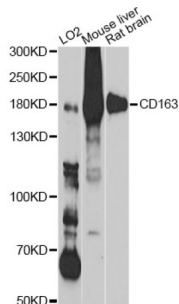


# Scavenger Receptor Cysteine-Rich Type 1 Protein M130 (CD163) Antibody

Catalogue No.: abx006198



Western blot analysis of extracts of various cell lines, using CD163 Antibody (abx006198) at 1/1000 dilution.

CD163 Antibody is a Rabbit Polyclonal Antibody against CD163.

<b>Target:</b>	Scavenger Receptor Cysteine-Rich Type 1 Protein M130 (CD163)
<b>Clonality:</b>	Polyclonal
<b>Reactivity:</b>	Human, Mouse, Rat
<b>Tested Applications:</b>	WB, IHC, IF/ICC
<b>Host:</b>	Rabbit
<b>Recommended dilutions:</b>	WB: 1/500 - 1/1000, IHC-P: 1/50 - 1/200, IF/ICC: 1/50 - 1/200. Not tested in IHC-F. Optimal dilutions/concentrations should be determined by the end user.
<b>Conjugation:</b>	Unconjugated
<b>Immunogen:</b>	A synthetic peptide corresponding to a sequence within amino acids 750-1050 of human CD163.
<b>Isotype:</b>	IgG
<b>Form:</b>	Liquid
<b>Purification:</b>	Purified by affinity chromatography.
<b>Storage:</b>	Aliquot and store at -20°C. Avoid repeated freeze/thaw cycles.
<b>UniProt Primary AC:</b>	Q86VB7 ( <a href="#">UniProt</a> , <a href="#">ExPASy</a> )
<b>Gene Symbol:</b>	CD163

# Datasheet

Version: 2.0.0  
Revision date: 02 Dec 2024



**GeneID:** [9332](#)

**NCBI Accession:** NP\_004235.4

**KEGG:** hsa:9332

**String:** [9606.ENSP00000352071](#)

**Molecular Weight:** Calculated MW: 125 kDa  
Observed MW: 160 kDa

**Buffer:** PBS, pH 7.3, containing 0.05% Proclin-300, 50% glycerol.

**Concentration:** > 0.2 mg/ml

**Note:** This product is for research use only.

For Reference Only