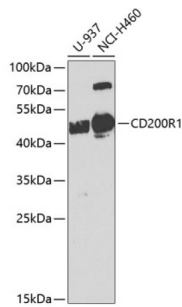


Cell Surface Glycoprotein CD200 Receptor 1 (CD200R1) Antibody

Catalogue No.: abx005782



Western blot analysis of various lysates using CD200R1 Antibody at 1/1000 dilution.
Secondary antibody: HRP-conjugated Goat anti-Rabbit IgG (H+L) at 1/10000 dilution.
Lysates/proteins: 25 µg per lane. Blocking buffer: 3% nonfat dry milk in TBST. Exposure time: 90s.

CD200R1 Antibody is a Rabbit Polyclonal Antibody against CD200R1.

Target:	Cell Surface Glycoprotein CD200 Receptor 1 (CD200R1)
Clonality:	Polyclonal
Reactivity:	Human
Tested Applications:	ELISA, WB
Host:	Rabbit
Recommended dilutions:	ELISA: 1 µg/ml, WB: 1/500 - 1/2000. Optimal dilutions/concentrations should be determined by the end user.
Conjugation:	Unconjugated
Immunogen:	Recombinant fusion protein containing a sequence corresponding to amino acids 249-348 of human CD200R1.
Isotype:	IgG
Form:	Liquid
Purification:	Purified by affinity chromatography.
Storage:	Aliquot and store at -20°C. Avoid repeated freeze/thaw cycles.
UniProt Primary AC:	Q8TD46 (UniProt , ExPASy)
Gene Symbol:	CD200R1
GeneID:	131450

Datasheet

Version: 3.0.0
Revision date: 12 Mar 2025



NCBI Accession: NP_620161.1

KEGG: hsa:131450

String: [9606.ENSP00000311035](#)

Molecular Weight: Calculated MW: 37 kDa
Observed MW: 45 kDa

Buffer: PBS, pH 7.3, containing 0.02% sodium azide, 50% glycerol.

Concentration: > 0.2 mg/ml

Note: THIS PRODUCT IS FOR RESEARCH USE ONLY. NOT FOR USE IN DIAGNOSTIC, THERAPEUTIC OR COSMETIC PROCEDURES. NOT FOR HUMAN OR ANIMAL CONSUMPTION.

For Reference Only