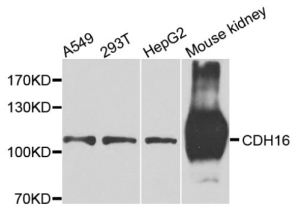
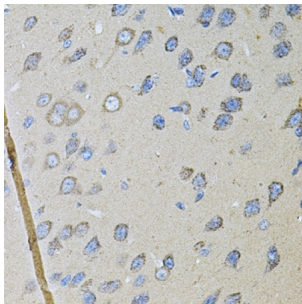


Cadherin 16 (CDH16) Antibody

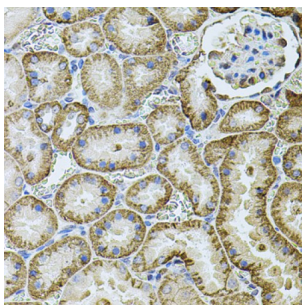
Catalogue No.: abx006568



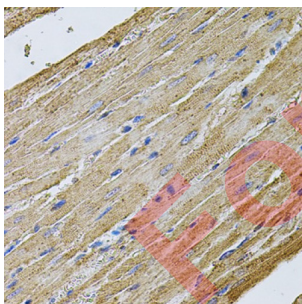
Western blot analysis of extracts of various cell lines, using CDH16 antibody (abx006568) at 1/1000 dilution.



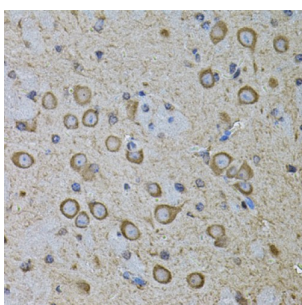
Immunohistochemistry of paraffin-embedded rat brain using CDH16 antibody (abx006568) at dilution of 1/100 (40x lens).



Immunohistochemistry of paraffin-embedded rat kidney using CDH16 antibody (abx006568) at dilution of 1/100 (40x lens).



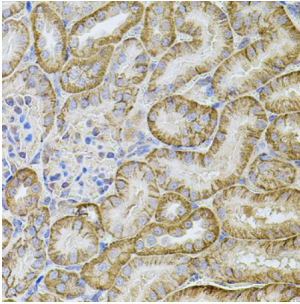
Immunohistochemistry of paraffin-embedded rat heart using CDH16 antibody (abx006568) at dilution of 1/100 (40x lens).



Immunohistochemistry of paraffin-embedded mouse brain using CDH16 antibody (abx006568) at dilution of 1/100 (40x lens).

Datasheet

Version: 1.0.0
Revision date: 03 Dec 2024



Immunohistochemistry of paraffin-embedded mouse kidney using CDH16 antibody (abx006568) at dilution of 1/100 (40x lens).

CDH16 Antibody is a Rabbit Polyclonal Antibody against CDH16.

Target:	Cadherin 16 (CDH16)
Clonality:	Polyclonal
Reactivity:	Human, Mouse, Rat
Tested Applications:	WB, IHC, IF/ICC
Host:	Rabbit
Recommended dilutions:	WB: 1/500 - 1/2000, IHC-P: 1/50 - 1/100, IF/ICC: 1/50 - 1/100. Not tested in IHC-F. Optimal dilutions/concentrations should be determined by the end user.
Conjugation:	Unconjugated
Immunogen:	Recombinant fusion protein containing a sequence corresponding to amino acids 19-230 of human Cadherin 16.
Isotype:	IgG
Form:	Liquid
Purification:	Purified by affinity chromatography.
Storage:	Aliquot and store at -20°C. Avoid repeated freeze/thaw cycles.
UniProt Primary AC:	O75309 (UniProt , ExpASY)
Gene Symbol:	CDH16
GeneID:	1014
NCBI Accession:	NP_004053.1

Datasheet

Version: 1.0.0
Revision date: 03 Dec 2024



KEGG: hsa:1014

String: [9606.ENSP00000299752](#)

Molecular Weight: Calculated MW: 90 kDa
Observed MW: 110 kDa

Buffer: PBS, pH 7.3, containing 0.02% sodium azide, 50% glycerol.

Concentration: > 0.2 mg/ml

Note: This product is for research use only.

For Reference Only