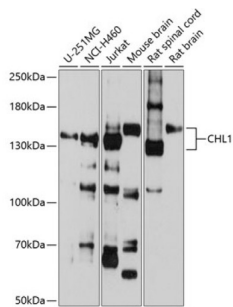


Cell Adhesion Molecule With Homology To L1CAM (CHL1) Antibody

Catalogue No.: abx124185



Western blot analysis of extracts of various cell lines using CHL1 Antibody (1/1000 dilution).

CHL1 Antibody is a Rabbit Polyclonal Antibody against CHL1.

Target:	Cell Adhesion Molecule With Homology To L1CAM (CHL1)
Clonality:	Polyclonal
Reactivity:	Human, Mouse, Rat
Tested Applications:	WB
Host:	Rabbit
Recommended dilutions:	WB: 1/200 - 1/2000. Optimal dilutions/concentrations should be determined by the end user.
Conjugation:	Unconjugated
Immunogen:	Recombinant fusion protein corresponding to human CHL1
Isotype:	IgG
Form:	Liquid
Purification:	Purified by affinity chromatography.
Storage:	Aliquot and store at -20°C. Avoid repeated freeze/thaw cycles.
UniProt Primary AC:	O00533 (UniProt , ExPASy)
Gene Symbol:	CHL1
GeneID:	10752

Datasheet

Version: 3.0.0

Revision date: 06 Feb 2025



NCBI Accession:	NP_001240316.1
Molecular Weight:	Calculated MW: 135 kDa/136 kDa Observed MW: 135 kDa
Buffer:	PBS, pH 7.3, containing 0.02% sodium azide, 50% glycerol.
Concentration:	1 mg/ml
Note:	This product is for research use only.

For Reference Only