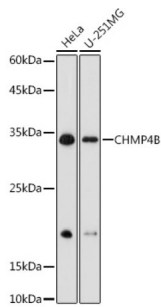
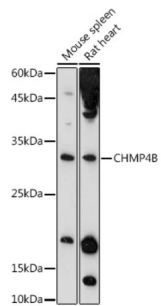


Charged Multivesicular Body Protein 4b (CHMP4B) Antibody

Catalogue No.: abx006940



Western blot analysis of lysates from Mouse spleen using CHMP4B Antibody at 1/400 dilution. Secondary antibody: HRP-conjugated Goat anti-Rabbit IgG (H+L) at 1/10000 dilution. Lysates/proteins: 25 µg per lane. Blocking buffer: 3% nonfat dry milk in TBST. Exposure time: 90s.



Immunofluorescence analysis of NIH/3T3 cells using CHMP4B Antibody at dilution of 1/200 (40x lens). Secondary antibody: Cy3-conjugated Goat anti-Rabbit IgG (H+L) at 1/500 dilution. Blue: DAPI for nuclear staining.

CHMP4B Antibody is a Rabbit Polyclonal Antibody against CHMP4B.

Target:	Charged Multivesicular Body Protein 4b (CHMP4B)
Clonality:	Polyclonal
Reactivity:	Human, Mouse, Rat
Tested Applications:	ELISA, WB, IF/ICC
Host:	Rabbit
Recommended dilutions:	ELISA: 1 µg/ml, WB: 1/500 - 1/1000, IF/ICC: 1/50 - 1/200. Optimal dilutions/concentrations should be determined by the end user.
Conjugation:	Unconjugated
Immunogen:	Recombinant fusion protein containing a sequence corresponding to amino acids 1-224 of human CHMP4B.
Isotype:	IgG
Form:	Liquid
Purification:	Purified by affinity chromatography.

Datasheet

Version: 3.0.0
Revision date: 25 Mar 2025



Storage: Aliquot and store at -20°C. Avoid repeated freeze/thaw cycles.

UniProt Primary AC: Q9H444 ([UniProt](#), [ExpASY](#))

Gene Symbol: CHMP4B

GeneID: [128866](#)

NCBI Accession: NP_789782.1

String: [9606.ENSP00000217402](#)

Molecular Weight: Calculated MW: 25 kDa
Observed MW: 25 kDa

Buffer: PBS, pH 7.3, containing 0.09% sodium azide, 50% glycerol.

Concentration: > 0.2 mg/ml

Note: THIS PRODUCT IS FOR RESEARCH USE ONLY. NOT FOR USE IN DIAGNOSTIC, THERAPEUTIC OR COSMETIC PROCEDURES. NOT FOR HUMAN OR ANIMAL CONSUMPTION.

For Reference Only