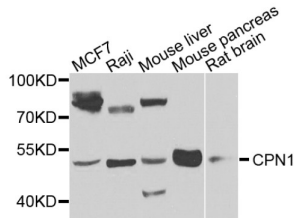


## Carboxypeptidase N1 (CPN1) Antibody

Catalogue No.: abx005662



Western blot analysis of extracts of various cell lines, using CPN1 antibody (abx005662) at 1/1000 dilution.

CPN1 Antibody is a Rabbit Polyclonal Antibody against CPN1.

<b>Target:</b>	Carboxypeptidase N1 (CPN1)
<b>Clonality:</b>	Polyclonal
<b>Reactivity:</b>	Human, Mouse, Rat
<b>Tested Applications:</b>	WB
<b>Host:</b>	Rabbit
<b>Recommended dilutions:</b>	WB: 1/500 - 1/2000. Optimal dilutions/concentrations should be determined by the end user.
<b>Conjugation:</b>	Unconjugated
<b>Immunogen:</b>	Recombinant fusion protein containing a sequence corresponding to amino acids 209-458 of human CPN1.
<b>Isotype:</b>	IgG
<b>Form:</b>	Liquid
<b>Purification:</b>	Purified by affinity chromatography.
<b>Storage:</b>	Aliquot and store at -20°C. Avoid repeated freeze/thaw cycles.
<b>UniProt Primary AC:</b>	P15169 ( <a href="#">UniProt</a> , <a href="#">ExPASy</a> )
<b>Gene Symbol:</b>	CPN1
<b>GeneID:</b>	<a href="#">1369</a>

# Datasheet

Version: 1.0.0  
Revision date: 11 Jan 2025



**NCBI Accession:** NP\_001299.1

**KEGG:** hsa:1369

**String:** [9606.ENSP00000359446](#)

**Molecular Weight:** Calculated MW: 52 kDa  
Observed MW: 52 kDa

**Buffer:** PBS, pH 7.3, containing 0.02% sodium azide, 50% glycerol.

**Concentration:** > 0.2 mg/ml

**Note:** This product is for research use only.

For Reference Only