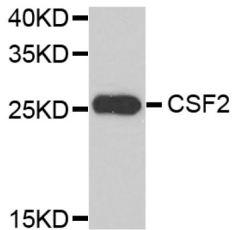


Granulocyte-Macrophage Colony-Stimulating Factor (CSF2) Antibody

Catalogue No.: abx006317

Mouse intestine



Western blot analysis of extracts of mouse intestine, using CSF2 antibody (abx006317) at 1/1000 dilution.

CSF2 Antibody is a Rabbit Polyclonal Antibody against CSF2.

Target:	Granulocyte-Macrophage Colony-Stimulating Factor (CSF2)
Clonality:	Polyclonal
Reactivity:	Human, Mouse, Rat
Tested Applications:	WB, IF/ICC
Host:	Rabbit
Recommended dilutions:	WB: 1/500 - 1/2000, IF/ICC: 1/50 - 1/200. Optimal dilutions/concentrations should be determined by the end user.
Conjugation:	Unconjugated
Immunogen:	A synthetic peptide corresponding to a sequence within amino acids 1-100 of human CSF2.
Isotype:	IgG
Form:	Liquid
Purification:	Purified by affinity chromatography.
Storage:	Aliquot and store at -20°C. Avoid repeated freeze/thaw cycles.
UniProt Primary AC:	P04141 (UniProt , ExPASy)
Gene Symbol:	CSF2
GeneID:	1437

Datasheet

Version: 1.0.0
Revision date: 03 Dec 2024



NCBI Accession: NP_000749.2

KEGG: hsa:1437

String: [9606.ENSP00000296871](#)

Molecular Weight: Calculated MW: 16 kDa
Observed MW: 16 kDa

Buffer: PBS, pH 7.3, containing 0.09% sodium azide, 50% glycerol.

Concentration: > 0.2 mg/ml

Note: This product is for research use only.

For Reference Only