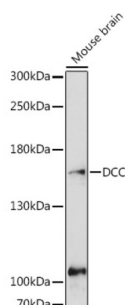


Netrin Receptor DCC (DCC) Antibody

Catalogue No.: abx124221



Western blot analysis of lysates from Mouse brain, using DCC Antibody at 1/1000 dilution. Secondary antibody: HRP-conjugated Goat anti-Rabbit IgG (H+L) at 1/10000 dilution. Lysates/proteins: 25 µg per lane. Blocking buffer: 3% nonfat dry milk in TBST. Exposure time: 300s.

DCC Antibody is a Rabbit Polyclonal Antibody against DCC.

Target:	Netrin Receptor DCC (DCC)
Clonality:	Polyclonal
Reactivity:	Human, Mouse
Tested Applications:	ELISA, WB
Host:	Rabbit
Recommended dilutions:	ELISA: 1 µg/ml, WB: 1/500 - 1/1000. Optimal dilutions/concentrations should be determined by the end user.
Conjugation:	Unconjugated
Immunogen:	A synthetic peptide corresponding to a sequence within amino acids 1000-1100 of human DCC.
Isotype:	IgG
Form:	Liquid
Purification:	Purified by affinity chromatography.
Storage:	Aliquot and store at -20°C. Avoid repeated freeze/thaw cycles.
UniProt Primary AC:	P43146 (UniProt , ExPASy)
Gene Symbol:	DCC
GeneID:	1630

Datasheet

Version: 2.0.0

Revision date: 05 Feb 2025



NCBI Accession:	NP_005206.2
Molecular Weight:	Calculated MW: 158 kDa Observed MW: 158 kDa
Buffer:	PBS, pH 7.3, containing 0.01% thimerosal, 50% glycerol.
Concentration:	> 0.2 mg/ml
Note:	This product is for research use only.

For Reference Only