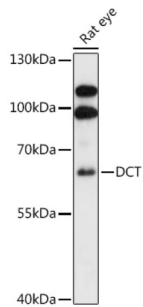


L-Dopachrome Tautomerase (DCT) Antibody

Catalogue No.: abx006334



Western blot analysis of extracts of Rat eye using DCT Antibody (1/1000 dilution).

DCT Antibody is a Rabbit Polyclonal Antibody against DCT.

Target:	L-Dopachrome Tautomerase (DCT)
Clonality:	Polyclonal
Reactivity:	Human, Rat
Tested Applications:	WB
Host:	Rabbit
Recommended dilutions:	WB: 1/500 - 1/2000. Optimal dilutions/concentrations should be determined by the end user.
Conjugation:	Unconjugated
Immunogen:	Recombinant fusion protein corresponding to human DCT
Isotype:	IgG
Form:	Liquid
Purification:	Purified by affinity chromatography.
Storage:	Aliquot and store at -20°C. Avoid repeated freeze/thaw cycles.
UniProt Primary AC:	P40126 (UniProt , ExpASY)
Gene Symbol:	DCT
GeneID:	1638

Datasheet

Version: 2.0.0
Revision date: 23 Feb 2025



NCBI Accession: NP_001913.2

KEGG: hsa:1638

String: [9606.ENSP00000392762](#)

Molecular Weight: Calculated MW: 59 kDa/62 kDa
Observed MW: 60 kDa

Buffer: PBS, pH 7.3, containing 0.01% thiomersal, 50% glycerol.

Concentration: 1 mg/ml

Note: This product is for research use only.

For Reference Only