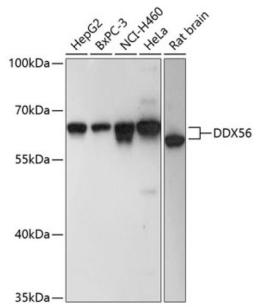


DEAD (Asp-Glu-Ala-Asp) Box Polypeptide 56 (DDX56) Antibody

Catalogue No.: abx124667



Western blot analysis of extracts of various cell lines using DDX56 Antibody (1/3000 dilution).

DDX56 Antibody is a Rabbit Polyclonal Antibody against DDX56.

Target: DEAD (Asp-Glu-Ala-Asp) Box Polypeptide 56 (DDX56)

Clonality: Polyclonal

Reactivity: Human, Rat

Tested Applications: WB

Host: Rabbit

Recommended dilutions: WB: 1/500 - 1/2000. Optimal dilutions/concentrations should be determined by the end user.

Conjugation: Unconjugated

Immunogen: Recombinant fusion protein corresponding to human DDX56

Isotype: IgG

Form: Liquid

Purification: Purified by affinity chromatography.

Storage: Aliquot and store at -20°C. Avoid repeated freeze/thaw cycles.

UniProt Primary AC: Q9NY93 ([UniProt](#), [Expasy](#))

Gene Symbol: DDX56

GeneID: [54606](#)

Datasheet

Version: 2.0.0

Revision date: 13 Mar 2025



NCBI Accession: NP_061955.1

Molecular Weight: Calculated MW: 57 kDa/61 kDa
Observed MW: 61 kDa

Buffer: PBS, pH 7.3, containing 0.02% sodium azide, 50% glycerol.

Concentration: 1 mg/ml

Note: THIS PRODUCT IS FOR RESEARCH USE ONLY. NOT FOR USE IN DIAGNOSTIC, THERAPEUTIC OR COSMETIC PROCEDURES. NOT FOR HUMAN OR ANIMAL CONSUMPTION.

For Reference Only