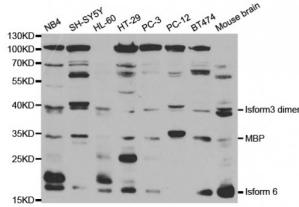
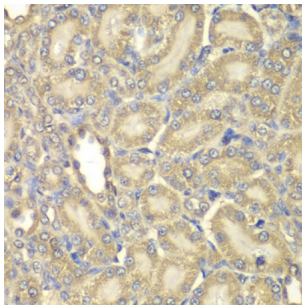


Myelin Basic Protein (MBP) Antibody

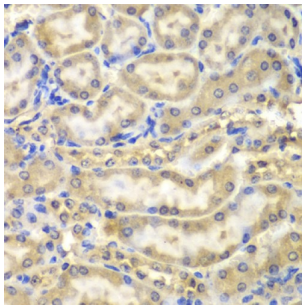
Catalogue No.: abx001398



Western blot analysis of extracts of various cell lines, using MBP antibody (abx001398) at 1/1000 dilution.



Immunohistochemistry of paraffin-embedded rat kidney using MBP antibody (abx001398) at dilution of 1/200 (40x lens).



Immunohistochemistry of paraffin-embedded mouse kidney using MBP antibody (abx001398) at dilution of 1/200 (40x lens).

MBP Antibody is a Rabbit Polyclonal antibody against MBP. MBP belongs to the myelin basic protein family. The classic group of MBP isoforms (isoform 4-isoform 14) are the most abundant protein components of the myelin membrane in the CNS. They have a role in both its formation and stabilization. The smaller isoforms might have an important role in remyelination of denuded axons in multiple sclerosis. The non-classic group of MBP isoforms (isoform 1-isoform 3/Golli-MBPs) may preferentially have a role in the early developing brain long before myelination, maybe as components of transcriptional complexes, and may also be involved in signaling pathways in T-cells and neural cells. This is a rabbit polyclonal antibody raised against the full-length of human MBP, and is capable of recognizing multiple isoforms of MBP.

Target: Myelin Basic Protein (MBP)

Clonality: Polyclonal

Reactivity: Human, Mouse, Rat

Tested Applications: WB, IHC, IF/ICC

Datasheet

Version: 2.0.0
Revision date: 31 Aug 2024



Host:	Rabbit
Recommended dilutions:	WB: 1/500 - 1/1000, IHC-P: 1/50 - 1/200, IF/ICC: 1/50 - 1/200. Not tested in IHC-F. Optimal dilutions/concentrations should be determined by the end user.
Conjugation:	Unconjugated
Immunogen:	Recombinant fusion protein containing a sequence corresponding to amino acids 80-165 of human Myelin Basic Protein.
Isotype:	IgG
Form:	Liquid
Purification:	Purified by affinity chromatography.
Storage:	Aliquot and store at -20°C. Avoid repeated freeze/thaw cycles.
UniProt Primary AC:	P02686 (UniProt , ExpASY)
Gene Symbol:	MBP
GeneID:	4155
NCBI Accession:	NP_001020272.1
KEGG:	hsa:4155
String:	9606.ENSP00000380958
Molecular Weight:	Calculated MW: 33 kDa Observed MW: 12-18 kDa
Buffer:	PBS, pH 7.3, containing 0.05% Proclin-300, 50% glycerol.
Concentration:	> 0.2 mg/ml
Note:	This product is for research use only.