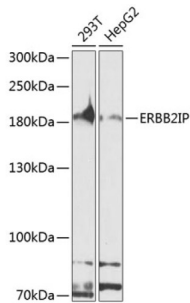


Datasheet

Version: 4.0.0
Revision date: 11 Feb 2025

ErbB2 Interacting Protein (ERBB2IP) Antibody

Catalogue No.: abx124273



Western blot analysis of various lysates using ERBB2IP Antibody at 1/1000 dilution.
Secondary antibody: HRP-conjugated Goat anti-Rabbit IgG (H+L) at 1/10000 dilution.
Lysates/proteins: 25 µg per lane. Blocking buffer: 3% nonfat dry milk in TBST. Exposure time: 90s.

ERBB2IP Antibody is a Rabbit Polyclonal Antibody against ERBB2IP.

Target:	ErbB2 Interacting Protein (ERBB2IP)
Clonality:	Polyclonal
Reactivity:	Human
Tested Applications:	ELISA, WB
Host:	Rabbit
Recommended dilutions:	ELISA: 1 µg/ml, WB: 1/500 - 1/2000. Optimal dilutions/concentrations should be determined by the end user.
Conjugation:	Unconjugated
Immunogen:	Recombinant fusion protein containing a sequence corresponding to amino acids 1152-1371 of human ERBB2IP.
Isotype:	IgG
Form:	Liquid
Purification:	Purified by affinity chromatography.
Storage:	Aliquot and store at -20°C. Avoid repeated freeze/thaw cycles.
UniProt Primary AC:	Q96RT1 (UniProt , ExPASy)
Gene Symbol:	ERBIN
GeneID:	55914

Datasheet

Version: 4.0.0
Revision date: 11 Feb 2025



NCBI Accession: NP_061165.1

KEGG: hsa:55914

String: [9606.ENSP00000426632](#)

Molecular Weight: Calculated MW: 158 kDa
Observed MW: 182 kDa

Buffer: PBS, pH 7.3, containing 0.02% sodium azide, 50% glycerol.

Concentration: > 0.2 mg/ml

Note: This product is for research use only.

For Reference Only