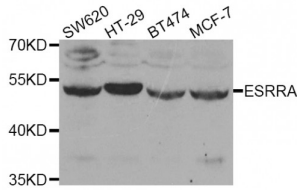


Datasheet

Version: 1.0.0
Revision date: 14 Aug 2024

Steroid Hormone Receptor ERR1 (ESRRA) Antibody

Catalogue No.: abx006697



Western blot analysis of extracts of various cell lines, using ESRRA antibody (abx006697) at 1/1000 dilution.

ESRRA Antibody is a Rabbit Polyclonal Antibody against ESRRA.

Target:	Steroid Hormone Receptor ERR1 (ESRRA)
Clonality:	Polyclonal
Reactivity:	Human, Mouse, Rat
Tested Applications:	WB, IF/ICC
Host:	Rabbit
Recommended dilutions:	WB: 1/500 - 1/2000, IF/ICC: 1/50 - 1/200. Optimal dilutions/concentrations should be determined by the end user.
Conjugation:	Unconjugated
Immunogen:	Recombinant fusion protein containing a sequence corresponding to amino acids 1-76 of human ESRRA.
Isotype:	IgG
Form:	Liquid
Purification:	Purified by affinity chromatography.
Storage:	Aliquot and store at -20°C. Avoid repeated freeze/thaw cycles.
UniProt Primary AC:	P11474 (UniProt , ExpASY)
Gene Symbol:	ESRRA
GeneID:	2101

Datasheet

Version: 1.0.0

Revision date: 14 Aug 2024



NCBI Accession: NP_004442.3

KEGG: hsa:2101

String: [9606.ENSP00000384851](#)

Molecular Weight: Calculated MW: 46 kDa
Observed MW: 53 kDa

Buffer: PBS, pH 7.3, containing 0.09% sodium azide, 50% glycerol.

Concentration: > 0.2 mg/ml

Note: This product is for research use only.

For Reference Only