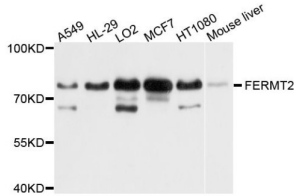


# Datasheet

Version: 3.0.0  
Revision date: 15 Jan 2025

## Fermitin Family Homolog 2 (FERMT2) Antibody

Catalogue No.: abx124013



Western blot analysis of extracts of various cell lines, using FERMT2 antibody (abx124013) at 1/1000 dilution.

FERMT2 Antibody is a Rabbit Polyclonal Antibody against FERMT2.

<b>Target:</b>	Fermitin Family Homolog 2 (FERMT2)
<b>Clonality:</b>	Polyclonal
<b>Reactivity:</b>	Human, Mouse, Rat
<b>Tested Applications:</b>	WB, IHC
<b>Host:</b>	Rabbit
<b>Recommended dilutions:</b>	WB: 1/1000 - 1/2000, IHC-P: 1/100 - 1/500. Not tested in IHC-F. Optimal dilutions/concentrations should be determined by the end user.
<b>Conjugation:</b>	Unconjugated
<b>Immunogen:</b>	Recombinant fusion protein containing a sequence corresponding to amino acids 380-550 of human FERMT2.
<b>Isotype:</b>	IgG
<b>Form:</b>	Liquid
<b>Purification:</b>	Purified by affinity chromatography.
<b>Storage:</b>	Aliquot and store at -20°C. Avoid repeated freeze/thaw cycles.
<b>UniProt Primary AC:</b>	Q96AC1 ( <a href="#">UniProt</a> , <a href="#">ExPASy</a> )
<b>Gene Symbol:</b>	FERMT2
<b>GeneID:</b>	<a href="#">10979</a>

# Datasheet

Version: 3.0.0

Revision date: 15 Jan 2025



---

<b>NCBI Accession:</b>	NP_006823.1
<b>Molecular Weight:</b>	Calculated MW: 78 kDa Observed MW: 78 kDa
<b>Buffer:</b>	PBS, pH 7.3, containing 0.02% sodium azide, 50% glycerol.
<b>Concentration:</b>	> 0.2 mg/ml
<b>Note:</b>	This product is for research use only.

For Reference Only