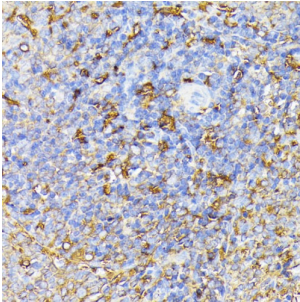
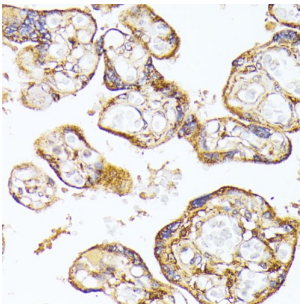


Vascular Endothelial Growth Factor Receptor 1 (FLT1) Antibody

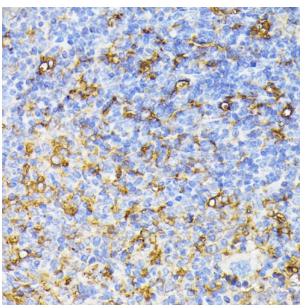
Catalogue No.: abx124272



Immunohistochemistry of paraffin-embedded Rat spleen using VEGF Receptor 1 Antibody (1/100 dilution, 40x lens).



Immunohistochemistry of paraffin-embedded Human placenta using VEGF Receptor 1 Antibody (1/100 dilution, 40x lens).



Immunohistochemistry of paraffin-embedded Mouse spleen using VEGF Receptor 1 Antibody (1/100 dilution, 40x lens).

FLT1 Antibody is a Rabbit Polyclonal Antibody against FLT1.

Target: Vascular Endothelial Growth Factor Receptor 1 (FLT1)

Clonality: Polyclonal

Reactivity: Human, Mouse, Rat

Tested Applications: IHC

Host: Rabbit

Recommended dilutions: IHC-P: 1/50 - 1/100. Not tested in IHC-F. Optimal dilutions/concentrations should be determined by the end user.

Conjugation: Unconjugated

Datasheet

Version: 4.0.0
Revision date: 11 Mar 2025



Immunogen:	Recombinant fusion protein corresponding to human VEGF Receptor 1
Isotype:	IgG
Form:	Liquid
Purification:	Purified by affinity chromatography.
Storage:	Aliquot and store at -20°C. Avoid repeated freeze/thaw cycles.
UniProt Primary AC:	P17948 (UniProt , ExpASY)
Gene Symbol:	FLT1
GeneID:	2321
NCBI Accession:	NP_002010.2
Buffer:	PBS, pH 7.3, containing 0.02% sodium azide, 50% glycerol.
Concentration:	1 mg/ml
Note:	THIS PRODUCT IS FOR RESEARCH USE ONLY. NOT FOR USE IN DIAGNOSTIC, THERAPEUTIC OR COSMETIC PROCEDURES. NOT FOR HUMAN OR ANIMAL CONSUMPTION.

For Reference Only