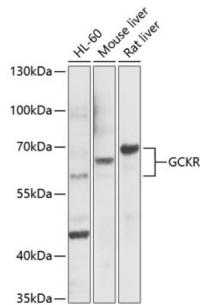


## Glucokinase Regulatory Protein (GCKR) Antibody

Catalogue No.: abx006790



Western blot analysis of lysates from Rat liver using GCKR Antibody at 1/1000 dilution incubated overnight at 4°C. Secondary antibody: HRP-conjugated Goat anti-Rabbit IgG (H+L) at 1/10000 dilution. Lysates/proteins: 25 µg per lane. Blocking buffer: 3% nonfat dry milk in TBST. Detection: ECL Basic Kit (RM00020) Exposure time: 90 s.

GCKR Antibody is a Rabbit Polyclonal Antibody against GCKR.

<b>Target:</b>	Glucokinase Regulatory Protein (GCKR)
<b>Clonality:</b>	Polyclonal
<b>Reactivity:</b>	Mouse, Rat
<b>Tested Applications:</b>	ELISA, WB
<b>Host:</b>	Rabbit
<b>Recommended dilutions:</b>	ELISA: 1 µg/ml, WB: 1/500 - 1/2000. Optimal dilutions/concentrations should be determined by the end user.
<b>Conjugation:</b>	Unconjugated
<b>Immunogen:</b>	Recombinant fusion protein containing a sequence corresponding to amino acids 1-300 of human GCKR.
<b>Isotype:</b>	IgG
<b>Form:</b>	Liquid
<b>Purification:</b>	Purified by affinity chromatography.
<b>Storage:</b>	Aliquot and store at -20°C. Avoid repeated freeze/thaw cycles.
<b>UniProt Primary AC:</b>	Q14397 ( <a href="#">UniProt</a> , <a href="#">ExpASY</a> )
<b>Gene Symbol:</b>	GCKR
<b>GeneID:</b>	<a href="#">2646</a>

# Datasheet

Version: 2.0.0  
Revision date: 13 Mar 2025



**NCBI Accession:** NP\_001477.2

**KEGG:** hsa:2646

**String:** [9606.ENSP00000264717](#)

**Molecular Weight:** Calculated MW: 69 kDa  
Observed MW: 60-69 kDa

**Buffer:** PBS, pH 7.3, containing 0.02% sodium azide, 50% glycerol.

**Concentration:** > 0.2 mg/ml

**Note:** THIS PRODUCT IS FOR RESEARCH USE ONLY. NOT FOR USE IN DIAGNOSTIC, THERAPEUTIC OR COSMETIC PROCEDURES. NOT FOR HUMAN OR ANIMAL CONSUMPTION.

For Reference Only