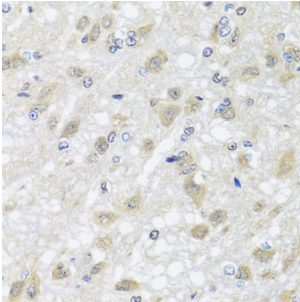
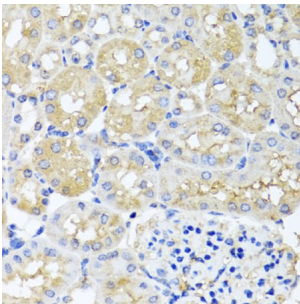


## Probable Histidine-tRNA Ligase, Mitochondrial (HARS2) Antibody

Catalogue No.: abx006533



Immunohistochemistry of paraffin-embedded rat brain using HARS2 antibody (abx006533) at dilution of 1/100 (40x lens).



Immunohistochemistry of paraffin-embedded mouse kidney using HARS2 antibody (abx006533) at dilution of 1/100 (40x lens).

HARS2 Antibody is a Rabbit Polyclonal Antibody against HARS2.

**Target:** Probable Histidine-tRNA Ligase, Mitochondrial (HARS2)

**Clonality:** Polyclonal

**Reactivity:** Human, Mouse, Rat

**Tested Applications:** WB

**Host:** Rabbit

**Recommended dilutions:** WB: 1/500 - 1/2000. Optimal dilutions/concentrations should be determined by the end user.

**Conjugation:** Unconjugated

**Immunogen:** Recombinant fusion protein containing a sequence corresponding to amino acids 217-506 of human HARS2.

**Isotype:** IgG

**Form:** Liquid

**Purification:** Purified by affinity chromatography.

# Datasheet

Version: 4.0.0  
Revision date: 25 Dec 2024



**Storage:** Aliquot and store at -20°C. Avoid repeated freeze/thaw cycles.

**UniProt Primary AC:** P49590 ([UniProt](#), [ExPASy](#))

**Gene Symbol:** HARS2

**GeneID:** [23438](#)

**NCBI Accession:** NP\_036340.1

**KEGG:** hsa:23438

**String:** [9606.ENSP00000230771](#)

**Molecular Weight:** Calculated MW: 57 kDa  
Observed MW: 50 kDa

**Buffer:** PBS, pH 7.3, containing 0.02% sodium azide, 50% glycerol.

**Concentration:** > 0.2 mg/ml

**Note:** This product is for research use only.

For Reference Only