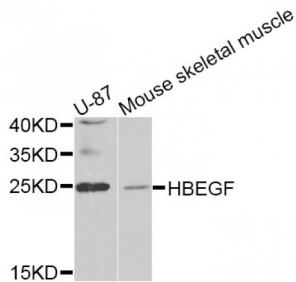


## Proheparin-Binding EGF-Like Growth Factor (HBEGF) Antibody

Catalogue No.: abx006691



Western blot analysis of extracts of various cell lines, using HBEGF antibody (abx006691) at 1/1000 dilution.

HBEGF Antibody is a Rabbit Polyclonal Antibody against HBEGF.

<b>Target:</b>	Proheparin-Binding EGF-Like Growth Factor (HBEGF)
<b>Clonality:</b>	Polyclonal
<b>Reactivity:</b>	Human, Mouse, Rat
<b>Tested Applications:</b>	WB, IF/ICC
<b>Host:</b>	Rabbit
<b>Recommended dilutions:</b>	WB: 1/500 - 1/1000, IF/ICC: 1/50 - 1/200. Optimal dilutions/concentrations should be determined by the end user.
<b>Conjugation:</b>	Unconjugated
<b>Immunogen:</b>	Recombinant fusion protein containing a sequence corresponding to amino acids 20-160 of human HB-EGF.
<b>Isotype:</b>	IgG
<b>Form:</b>	Liquid
<b>Purification:</b>	Purified by affinity chromatography.
<b>Storage:</b>	Aliquot and store at -20°C. Avoid repeated freeze/thaw cycles.
<b>UniProt Primary AC:</b>	Q99075 ( <a href="#">UniProt</a> , <a href="#">ExpASY</a> )
<b>Gene Symbol:</b>	HBEGF
<b>GeneID:</b>	<a href="#">1839</a>

# Datasheet

Version: 2.0.0  
Revision date: 27 Jul 2024



**NCBI Accession:** NP\_001936.1

**KEGG:** hsa:1839

**String:** [9606.ENSP00000230990](#)

**Molecular Weight:** Calculated MW: 23 kDa  
Observed MW: 23 kDa

**Buffer:** PBS, pH 7.3, containing 0.05% Proclin-300, 50% glycerol.

**Concentration:** > 0.2 mg/ml

**Note:** This product is for research use only.

For Reference Only