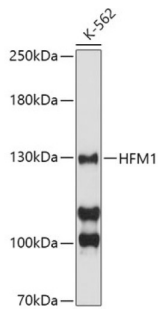
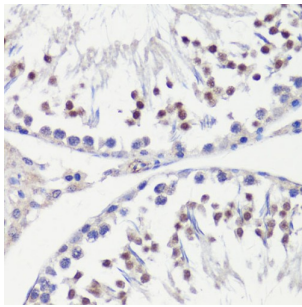


Probable ATP-Dependent DNA Helicase HFM1 (HFM1) Antibody

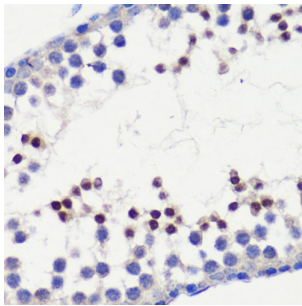
Catalogue No.: abx124216



Western blot analysis of extracts of K-562 cells, using HFM1 antibody at 1/1000 dilution.



Immunohistochemistry of paraffin-embedded rat testis using HFM1 antibody at 1/100 dilution (40x lens).



Immunohistochemistry of paraffin-embedded mouse testis using HFM1 antibody at 1/100 dilution (40x lens).

HFM1 Antibody is a Rabbit Polyclonal Antibody against HFM1.

Target: Probable ATP-Dependent DNA Helicase HFM1 (HFM1)

Clonality: Polyclonal

Reactivity: Human, Mouse, Rat

Tested Applications: WB, IHC

Host: Rabbit

Recommended dilutions: WB: 1/500 - 1/2000, IHC-P: 1/50 - 1/100. Not tested in IHC-F. Optimal dilutions/concentrations should be determined by the end user.

Conjugation: Unconjugated

Datasheet

Version: 4.0.0
Revision date: 25 Dec 2024



Immunogen:	Recombinant fusion protein containing a sequence corresponding to amino acids 1-240 of human HFM1.
Isotype:	IgG
Form:	Liquid
Purification:	Purified by affinity chromatography.
Storage:	Aliquot and store at -20°C. Avoid repeated freeze/thaw cycles.
UniProt Primary AC:	A2PYH4 (UniProt , ExPASy)
Gene Symbol:	HFM1
GeneID:	164045
NCBI Accession:	NP_001017975.4
KEGG:	hsa:164045
String:	9606.ENSP00000359454
Molecular Weight:	Calculated MW: 163 kDa Observed MW: 130 kDa
Buffer:	PBS, pH 7.3, containing 0.02% sodium azide, 50% glycerol.
Concentration:	0.89 mg/ml
Note:	This product is for research use only.

For Reference Only