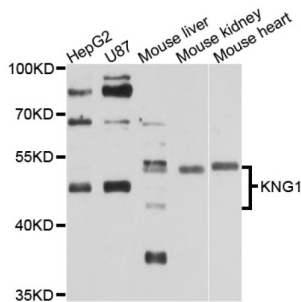


Kininogen 1 (KNG1) Antibody

Catalogue No.: abx001403



Western blot analysis of extracts of various cell lines, using KNG1 antibody (abx001403) at 1/1000 dilution.

KNG1 Antibody is a Rabbit Polyclonal antibody against KNG1. Kininogens are inhibitors of thiol proteases. Kininogen 1 plays important role in Kinin-kallikrein system. This gene is translated into High-molecular weight kininogen (HMWK) and low-molecular weight kininogen (LMWK) after alternative splicing. HMWK is produced by the liver together with prekallikrein. It acts mainly as a cofactor on coagulation and inflammation, and has no intrinsic catalytic activity. LMWK is produced locally by numerous tissues, and secreted together with tissue kallikrein. 11926-1-AP was generated against N-terminal 300 aa of HMW kininogen. It can bind both HMW and LMW kininogen.

Target:	Kininogen 1 (KNG1)
Clonality:	Polyclonal
Reactivity:	Human, Mouse, Rat
Tested Applications:	WB, IF/ICC
Host:	Rabbit
Recommended dilutions:	WB: 1/100 - 1/500, IF/ICC: 1/50 - 1/200. Optimal dilutions/concentrations should be determined by the end user.
Conjugation:	Unconjugated
Immunogen:	Recombinant fusion protein containing a sequence corresponding to amino acids 148-427 of human Kininogen 1 (KNG1).
Isotype:	IgG
Form:	Liquid
Purification:	Purified by affinity chromatography.
Storage:	Aliquot and store at -20°C. Avoid repeated freeze/thaw cycles.
UniProt Primary AC:	P01042 (UniProt , ExPASy)

Datasheet

Version: 2.0.0
Revision date: 15 Jan 2025



Gene Symbol: KNG1

GeneID: [3827](#)

NCBI Accession: NP_000884.1

KEGG: hsa:3827

String: [9606.ENSP00000265023](#)

Molecular Weight: Calculated MW: 72 kDa
Observed MW: 72 kDa

Buffer: PBS, pH 7.3, containing 0.05% Proclin-300, 50% glycerol.

Concentration: > 0.2 mg/ml

Note: This product is for research use only.

For Reference Only